

Fig.S1 A forest plot diagram comparing the mean change in CRT of anti-VEGF with sham, laser and steroids at 6 and 12 months.

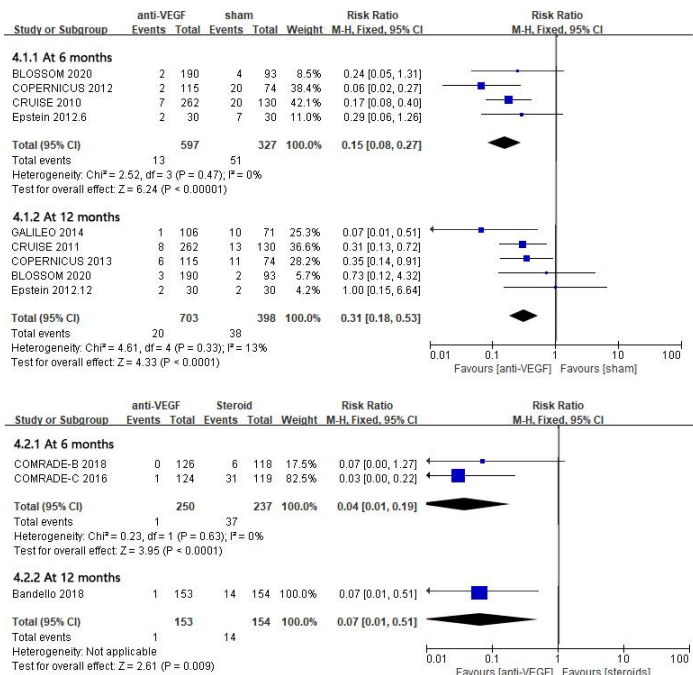


Fig.S2 A forest plot diagram comparing the proportion of eyes losing of 15 ETDRS letters or more of anti-VEGF with sham and steroids at 6 and 12 months.

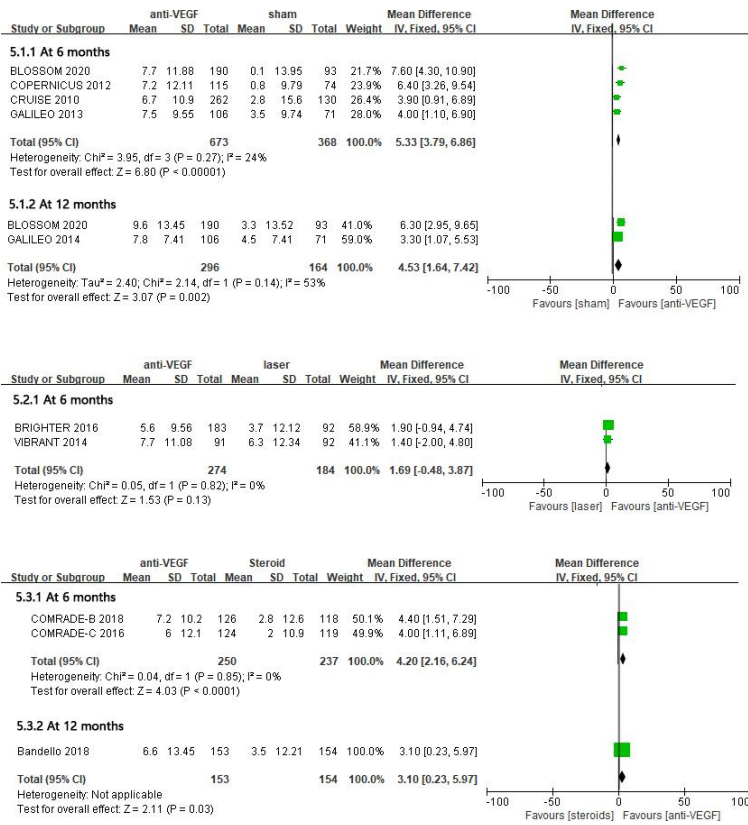


Fig.S3 A forest plot diagram comparing the mean change in quality of life of anti-VEGF with sham, laser and steroids at 6 and 12 months.

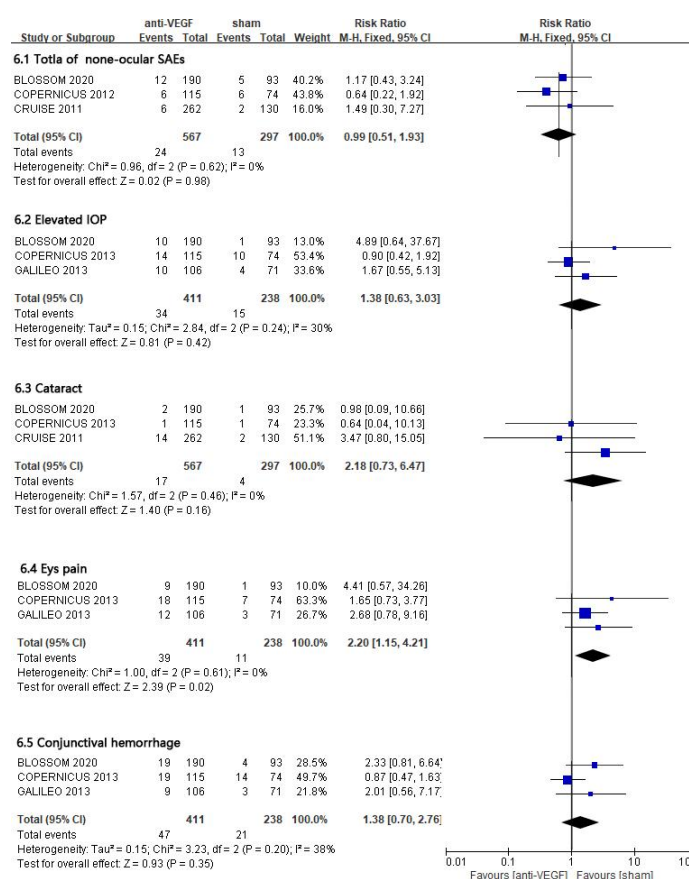


Fig.S4 A forest plot diagram comparing the safety outcomes of anti-VEGF with sham, including a total of non-SAEs, elevated IOP, cataract, eye pain, and conjunctival haemorrhage.

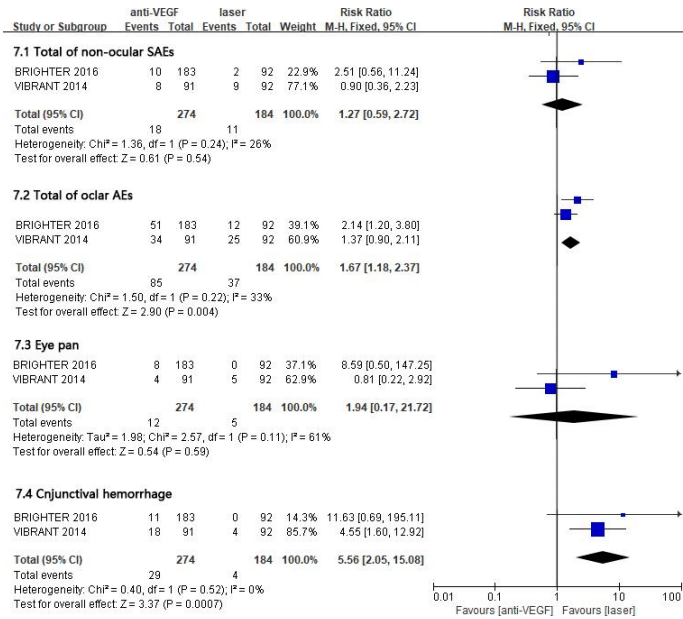


Fig.S5 A forest plot diagram comparing the safety outcomes of anti-VEGF with laser, including a total of non-SAEs and ocular AEs, eye pain, and conjunctival haemorrhage.

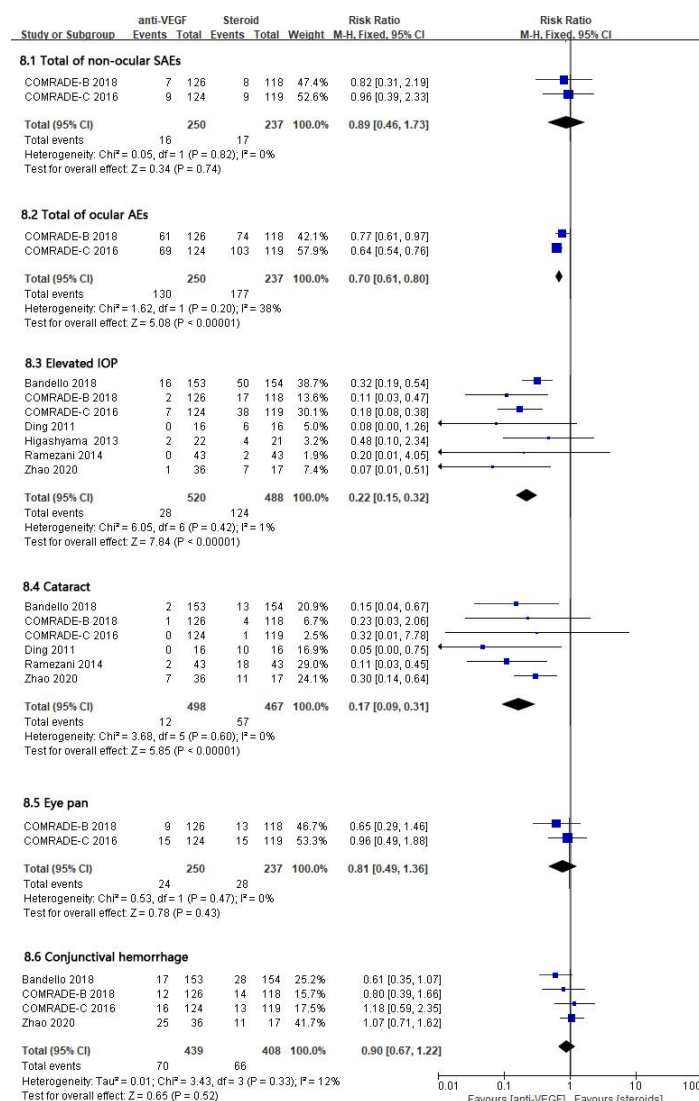


Fig.S6 A forest plot diagram comparing the safety outcomes of anti-VEGF with steroids, including a total of non-SAEs and ocular AEs, elevated IOP, cataract, eye pain, and conjunctival haemorrhage.

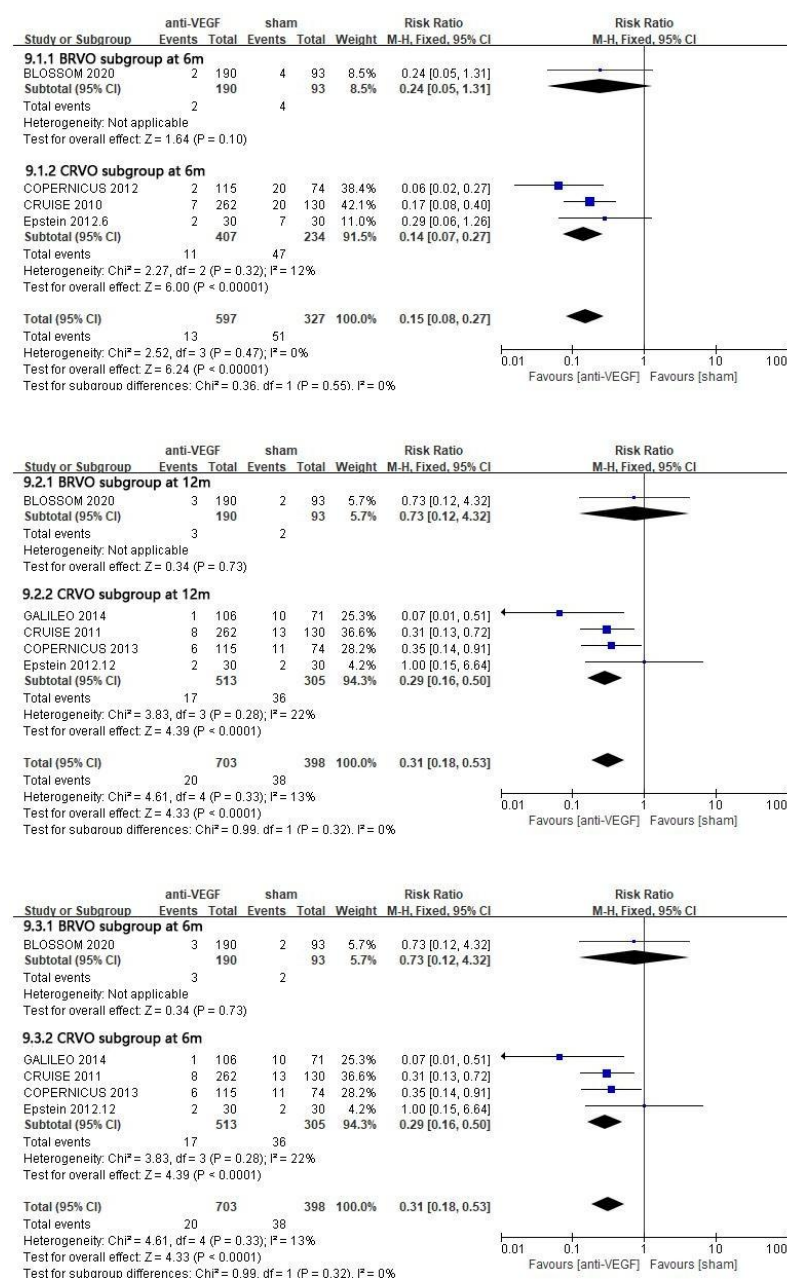


Fig.S7 A forest plot diagram comparing the outcome of the number of patients who lost VA \geq 15 ETRD letters in BRVO and CRVO subgroups.

Table S1 Subgroup analysis results of the efficacy outcomes									
Outcomes	Follow- up (months)	Type of RVO	Control group	Number of studies	Heterogeneity test results		Effect model	Meta analysis results	
					P value	I ²		RRor MD (95%CI)	P value
Mean change in BCVA	6	BRVO	Sham	1	-	-	fixed	7.50 [5.29, 9.71]	<0.00001
			Steroids	1	-	-	fixed	8.10 [5.05, 11.15]	<0.00001
		CRVO	Sham	5	0.08	52%	random	15.86 [12.03, 19.69]	<0.00001
			Steroids	3	0.10	57%	random	13.11 [4.69, 21.54]	0.002
	12	BRVO	Sham	1	-	-	fixed	6.30 [4.00, 8.60]	<0.00001
		CRVO	Sham	4	0.20	36%	fixed	8.74 [6.12, 11.35]	<0.00001
Improvement of 15 or more ETDRS letters	6	BRVO	Sham	1	-	-	fixed	1.72 [1.19, 2.49]	0.004
			Steroids	1	-	-	fixed	1.64 [1.25, 2.15]	0.0004
		CRVO	Sham	4	0.53	0%	fixed	3.12 [2.41, 4.06]	<0.00001
			Steroids	1	-	-	fixed	3.18 [2.12, 4.77]	<0.00001
	12	BRVO	Sham	1	-	-	fixed	1.43 [1.07, 1.90]	0.01
		CRVO	Sham	4	0.69	0%	fixed	1.67 [1.39, 2.01]	<0.00001
Loss of 15 or more ETDRS letters	6	BRVO	Sham	1	-	-	fixed	0.24 [0.05, 1.31]	0.10
			Steroids	1	-	-	fixed	0.07 [0.00, 1.27]	0.07
		CRVO	Sham	3	0.32	12%	fixed	0.14 [0.07, 0.27]	<0.00001
			Steroids	1	-	-	fixed	0.03 [0.00, 0.22]	0.0006
	12	BRVO	Sham	1	-	-	fixed	0.73 [0.12, 4.32]	0.73
		CRVO	Sham	4	0.28	22%	fixed	0.29 [0.16, 0.50]	<0.0001
Mean change in CRT	6	BRVO	Sham	1	-	-	fixed	-57.50 [-108.57, -6.43]	0.03
			Steroids	1	-	-	fixed	-118.30 [-161.17, -75.43]	<0.00001

Mean change in quality of life	6	CRVO	Sham	5	0.38	4%	fixed	-278.27 [-316.13, -240.41]	<0.00001
			Steroids	3	0.008	79%	random	-126.55 [-236.80, -16.29]	0.02
		BRVO	Sham	1	-	-	fixed	7.60 [4.30, 10.90]	<0.00001
			Steroids	1	-	-	fixed	4.40 [1.51, 7.29]	0.003
	12	CRVO	Sham	3	0.44	0%	fixed	4.70 [2.96, 6.44]	<0.00001
			Steroids	1	-	-	fixed	4.00 [1.11, 6.89]	0.007
		BRVO	Sham	1	-	-	fixed	6.30 [2.95, 9.65]	0.0002
		CRVO	Sham	1	-	-	fixed	3.30 [1.07, 5.53]	0.004