

SUPPLEMENTARY MATERIALS

Supplementary Table S1. NIU and UME diagnosis codes

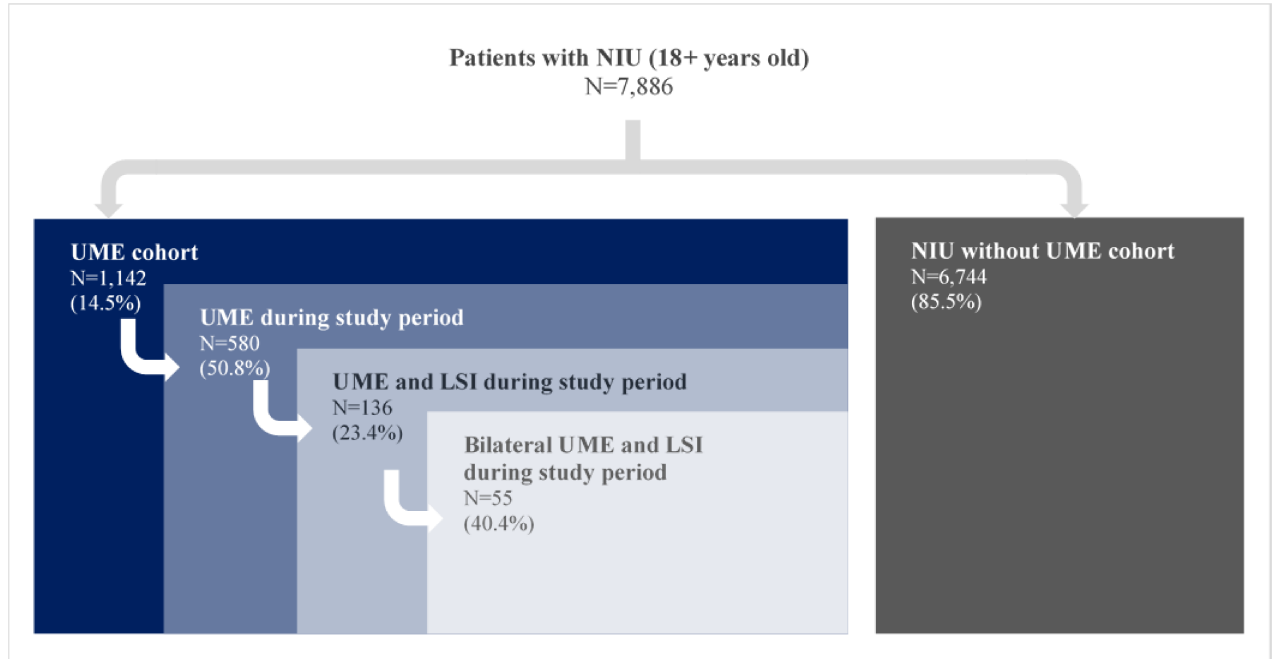
ICD-10-CM diagnosis code	Description
NIU	
D86.83	Sarcoid iridocyclitis
H20.00	Unspecified acute and subacute iridocyclitis
H20.01x	Primary iridocyclitis
H20.02x	Recurrent acute iridocyclitis
H20.04x	Secondary non-infectious iridocyclitis
H20.05x	Hypopyon
H20.1x	Chronic iridocyclitis
H20.2x	Lens-induced iridocyclitis
H20.81x	Fuchs' heterochromic cyclitis
H20.82x	Vogt-koyanagi syndrome
H20.9	Unspecified iridocyclitis
H30.0x	Focal chorioretinal inflammation
H30.1x	Disseminated chorioretinal inflammation
H30.2x	Posterior cyclitis
H30.81x	Harada's disease
H30.89x	Other chorioretinal inflammations
H30.9x	Unspecified chorioretinal inflammation
H35.02x	Exudative retinopathy
H35.06x	Retinal vasculitis
H44.11x	Panuveitis
H44.13x	Sympathetic uveitis
M35.2	Behçet's disease
UME	
H35.81	Retinal edema
H35.35x	Cystoid macular degeneration
H59.03x	Cystoid macular edema following cataract surgery

ICD-10-CM: International Classification of Diseases, Tenth Revision, Clinical Modification; UME: uveitic macular edema; NIU: non-infectious uveitis

Supplementary Table S2. Classification of anterior, intermediate, posterior, and panuveitic NIU

ICD-10-CM diagnosis code	Description	NIU type
H20.82x	Vogt-koyanagi syndrome	Posterior
H30.0x	Focal chorioretinal inflammation	Posterior
H30.1x	Disseminated chorioretinal inflammation	Posterior
H30.81x	Harada's disease	Posterior
H30.89x	Other chorioretinal inflammations	Posterior
H30.9x	Unspecified chorioretinal inflammation	Posterior
H35.02x	Exudative retinopathy	Posterior
H35.06x	Retinal vasculitis	Posterior
H20.00	Unspecified acute and subacute iridocyclitis	Anterior
H20.01x	Primary iridocyclitis	Anterior
H20.02x	Recurrent acute iridocyclitis	Anterior
H20.04x	Secondary non-infectious iridocyclitis	Anterior
H20.05x	Hypopyon	Anterior
H20.1x	Chronic iridocyclitis	Anterior
H20.2x	Lens-induced iridocyclitis	Anterior
H20.81x	Fuchs' heterochromic cyclitis	Anterior
H20.9	Unspecified iridocyclitis	Anterior
H30.2x	Posterior cyclitis	Intermediate
D86.83	Sarcoid iridocyclitis	Panuveitis
H44.11x	Panuveitis	Panuveitis
H44.13x	Sympathetic uveitis	Panuveitis
M35.2	Behçet's disease	Panuveitis

ICD-10-CM: International Classification of Diseases, Tenth Revision, Clinical Modification; NIU: non-infectious uveitis

Supplementary Figure S1. Sample selection – Medicare population

LSI: local steroid injection treatment; UME: uveitic macular edema; N: number; NIU: non-infectious uveitis

Supplementary Figure S2. Annual healthcare costs by vision status among patients with NIU – Medicare population

	Patients with no indicator of vision loss	Patients with moderate vision loss	Patients with severe vision loss	Patients with blindness
Number of patients	N= 14,813	N= 1,017	N= 558	N= 194
Medical costs, mean \pm SD [median]	\$16,213 \pm \$32,065 [\$5,228]	\$27,420 \pm \$42,493 [\$10,165]	\$30,680 \pm \$46,992 [\$13,690]	\$37,309 \pm \$53,591 [\$16,282]
Eye-related costs	\$2,084 \pm \$8,954 [\$300]	\$3,922 \pm \$10,866 [\$608]	\$5,223 \pm \$14,363 [\$536]	\$5,275 \pm \$14,558 [\$291]
<i>Inpatient costs</i>	\$679 \pm \$8,237 [\$0]	\$1,890 \pm \$10,087 [\$0]	\$2,954 \pm \$13,446 [\$0]	\$3,488 \pm \$13,223 [\$0]
<i>Emergency department costs</i>	\$11 \pm \$143 [\$0]	\$27 \pm \$230 [\$0]	\$23 \pm \$211 [\$0]	\$13 \pm \$148 [\$0]
<i>Outpatient costs</i>	\$1,394 \pm \$3,495 [\$292]	\$2,006 \pm \$3,844 [\$521]	\$2,247 \pm \$4,485 [\$473]	\$1,774 \pm \$4,820 [\$252]
Non-eye related costs	\$14,129 \pm \$29,978 [\$3,664]	\$23,497 \pm \$39,803 [\$6,982]	\$25,457 \pm \$43,718 [\$9,348]	\$32,034 \pm \$52,253 [\$10,909]

SD: standard deviation