

Supplementary Materials

Supplementary Table 1. Primers used for qPCR detection.

Gene	Forward Primer	Reverse Primer	Product size
<i>GAPDH</i>	149 AGCCACATCGCTCAGACAC	167 214 GCCCAATACGACCAAATCC	196 66
<i>H</i>	646 AGAACATGTGTAAGCTGCGG	794 GTTGCCTCTCACTCGGTTC	776 149
<i>OCT4</i>	665		
<i>ALDH1</i>	813 ATCAAAGAAGCTGCCGGGAA	913 GCATTGTCCAAGTCGGCATC	101
<i>A1</i>	832	894	
<i>Lumican</i>	81 AGTGTCAAGACAGTAAGGATTCA	237 TCTGGTGCACAGTTTGGTGA	157
<i>n</i>	103	218	
<i>Keratocan</i>	1098 CGCACAATCAACTCACAAAG	1209 GATGGGCTGGGACATATTAC	112
<i>an</i>	1117	1190	

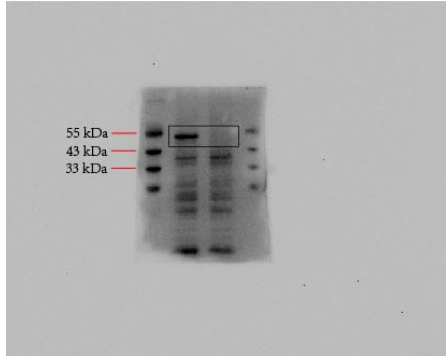
Supplementary Table 2. Antibodies used in immunostaining and WB

Antibodies	Cat No.	Brand	Dilution ratio
Immunofluorescence			
OCT4	AB3209	Millipore	1:200
SOX2	AB5603	Millipore	1:200
SSEA-4	ab16287	Abcam	1:200
NANOG	14295-1-AP	Proteintech	1:200
ALDH1A1	12418-1-AP	Proteintech	1:200
Keratocan	NBP1-98389	Novus Biologicals	1:200
α -SMA	14395-1-AP	Proteintech	1:200
Western Blot			
ALDH1A1	12418-1-AP	Proteintech	1:1000
Keratocan	NBP1-98389	Novus Biologicals	1:1000
α -SMA	14395-1-AP	Proteintech	1:1000
FN1	15613-1-AP	Proteintech	1:1000
HRP-Conjugated GAPDH	60004-1-IG	Proteintech	1:5000
HRP-conjugated β -Actin	HRP-60008	Proteintech	1:5000

Uncropped scans of the blots

Figure 3C

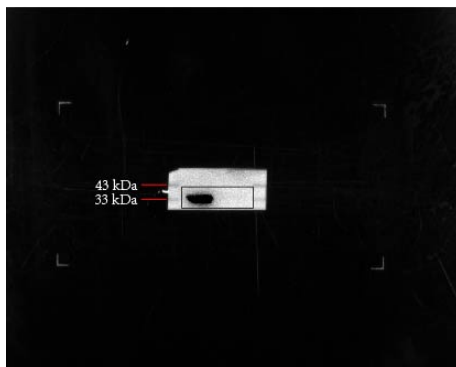
ALDH1A1



β -actin



Keratocan



β -actin

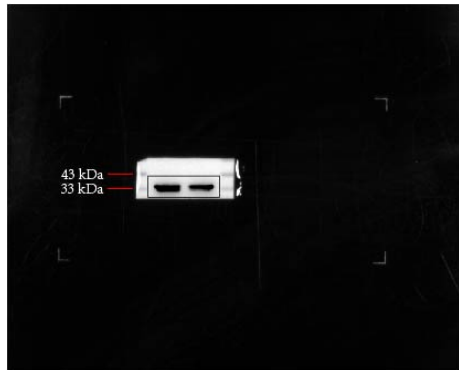
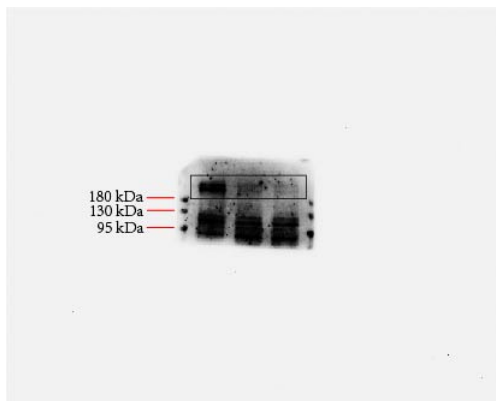
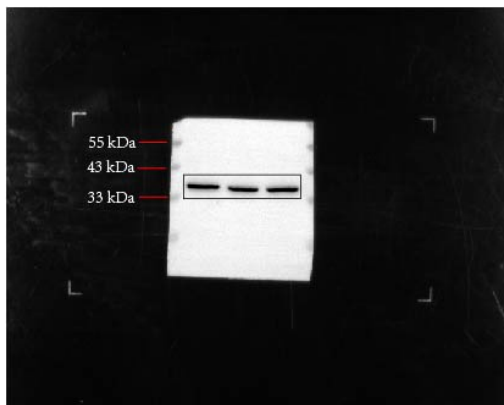


Figure 4D

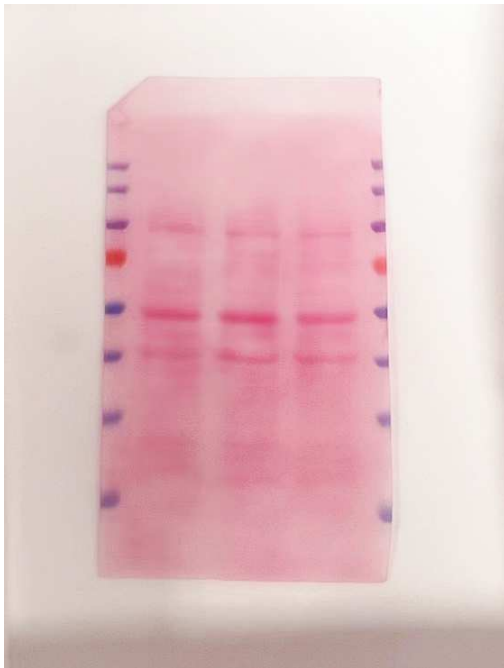
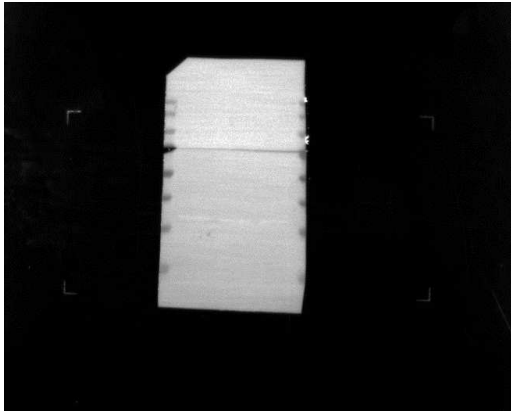
FN1



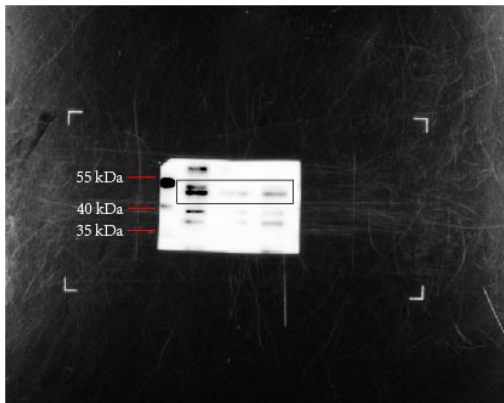
GAPDH



Ponceau S staining for Figure 4D



α -SMA



GAPDH

