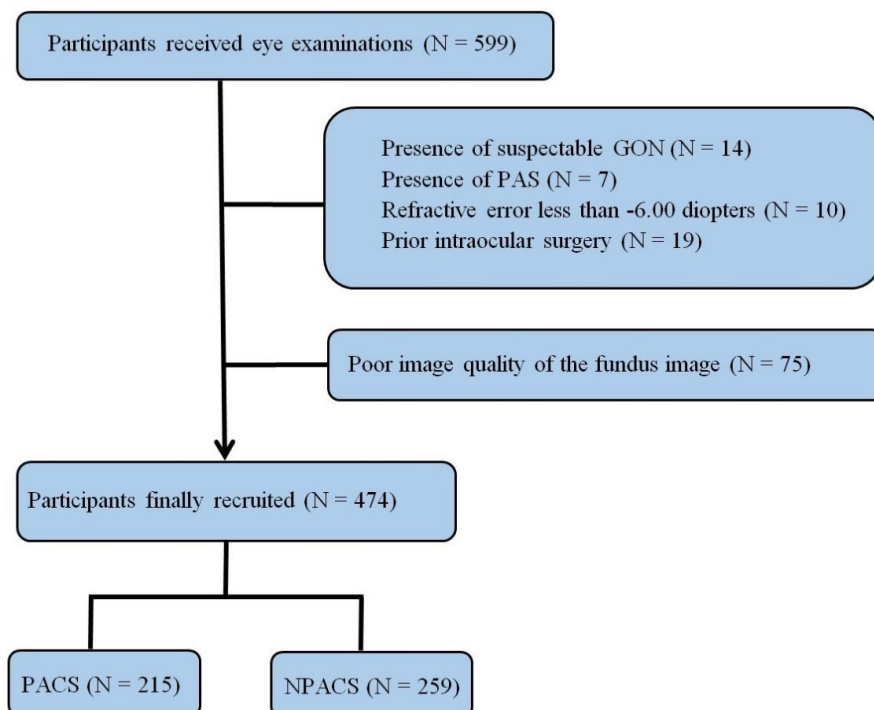


Supplementary material

online supplemental material, S1

Patient enrolment flowchart



GON, glaucomatous optic neuropathy; PACS, primary angle closure suspect; PAS, peripheral anterior synechiae

online supplemental material, S2

Table 2. Comparison of Demographic and Clinical Characteristics Between All Participants with and without Beta Parapapillary Atrophy

Parameter	Subjects with β -PPA (N = 220)	Subjects without β -PPA (N = 254)	P value
Age (IR), years	62.00 (57.00–67.00)	59.00 (55.00–65.00)	<0.001*
Sex (male/female)	65/155	58/196	0.115†
BCVA (IR)	1.00 (0.80–1.00)	1.00 (0.80–1.00)	0.057*
IOP (IR), mmHg	16.00 (15.00–18.00)	16.00 (15.00–18.00)	0.672*
SE (IR), diopter	0.50 (-0.13–1.38)	0.44 (-0.25–1.25)	0.267*

Axial length (mean \pm SD), mm	22.90 \pm 0.81	22.78 \pm 0.79	0.096‡
VCDR (IR)	0.35 (0.30–0.41)	0.35 (0.29–0.41)	0.800*
Disc area (IR), mm ²	2.55 (2.26–2.96)	2.49 (2.16–2.80)	0.013*
Rim disc area ratio (IR)	0.86 (0.81–0.90)	0.86 (0.81–0.90)	0.936*
Mean cup depth (IR), mm	0.10 (0.06–0.14)	0.10 (0.07–0.14)	0.486*
Maximum cup depth (IR), mm	0.28 (0.20–0.37)	0.26 (0.18–0.36)	0.205*
Diagnosis (PACS /Non-PACS)	105/115	110/144	0.356†

β -PPA, beta papillary atrophy; IR, interquartile range; BCVA, best-corrected visual acuity; IOP, intraocular pressure; SE, spherical equivalence; SD, standard deviation; VCDR, vertical cup-to-disc ratio; PACS, primary angle closure suspect

*Mann–Whitney test

† χ^2 test

‡ Independent samples t-test

Statistically significant values are indicated in bold.

online supplemental material, S3

Table 3. Comparison of Demographic and Clinical Characteristics between PACS with and without Beta Parapapillary Atrophy

Parameter	PACS with β -PPA (N = 105)	PACS without β -PPA (N = 110)	P value
Age (mean \pm SD), years	63.51 \pm 6.15	61.12 \pm 6.70	0.007‡
Sex (male/female)	27/78	20/90	0.182†
BCVA (IR)	0.80 (0.80–1.00)	1.00 (0.80–1.00)	0.126*
IOP (IR), mmHg	16.00 (15.00–18.00)	16.50 (15.00–18.00)	0.703*
SE (IR), diopter	1.00 (0.25–1.75)	0.88 (0.25–1.63)	0.379*

Axial length (mean ± SD), mm	22.63 ± 0.77	22.42 ± 0.68	0.033 ‡
VCDR (mean ± SD)	0.37 ± 0.09	0.37 ± 0.08	0.735‡
Disc area (mean ± SD), mm ²	2.63 ± 0.52	2.52 ± 0.45	0.112‡
Rim disc area ratio (IR)	0.85 (0.79–0.88)	0.84 (0.78–0.88)	0.373*
Mean cup depth (IR), mm	0.11 (0.06–0.15)	0.11 (0.08–0.15)	0.626*
Maximum cup depth (IR), mm	0.29 (0.21–0.44)	0.29 (0.20–0.41)	0.669*

β-PPA, beta papillary atrophy; IR, interquartile range; BCVA, best-corrected visual acuity; IOP, intraocular pressure; SE, spherical equivalence; SD, standard deviation; VCDR, vertical cup-to-disc ratio; PACS, primary angle closure suspect

*Mann–Whitney test

† χ^2 test

‡ Independent samples t-test

Statistically significant values are indicated in bold.