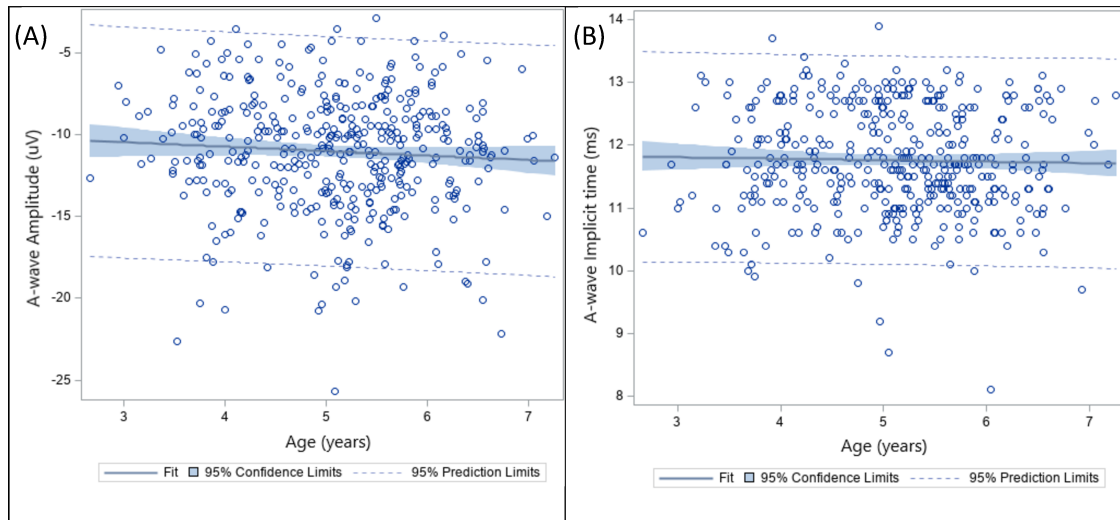


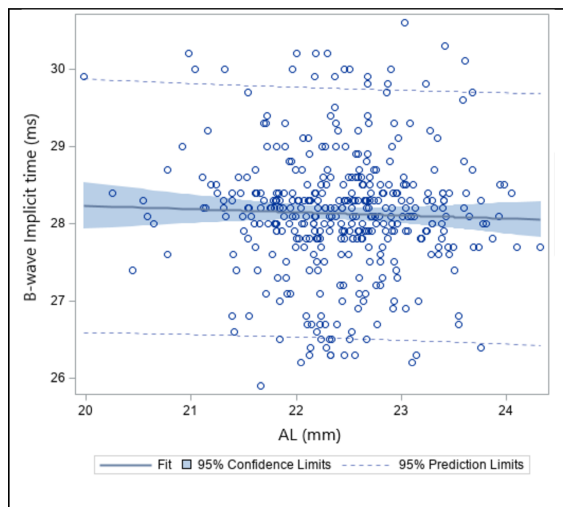
## 1 SUPPLEMENTAL MATERIAL



2 [Supplementary Figure 1] Pearson correlations between (A) a-wave amplitude (B) a-wave

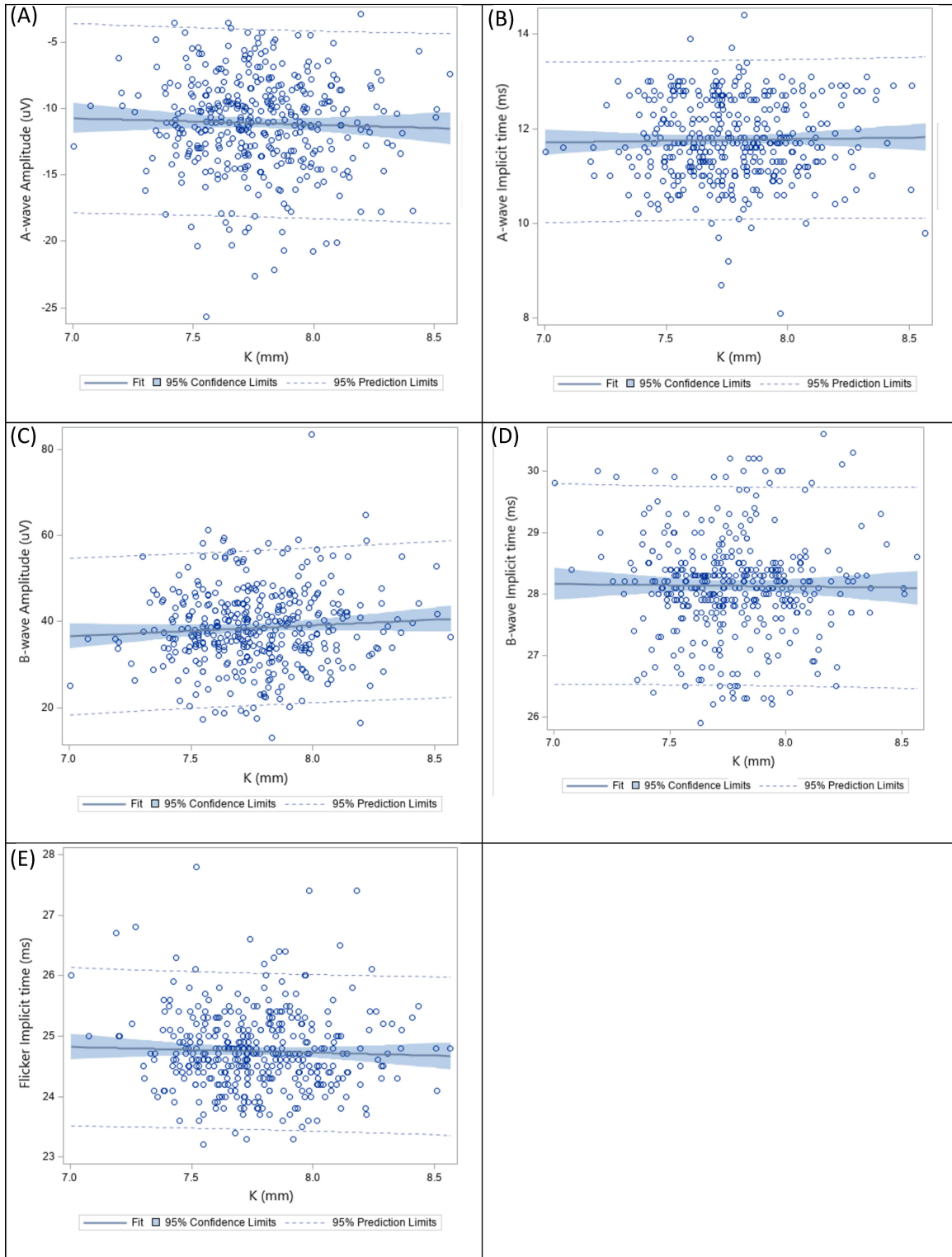
3 implicit time and age

4

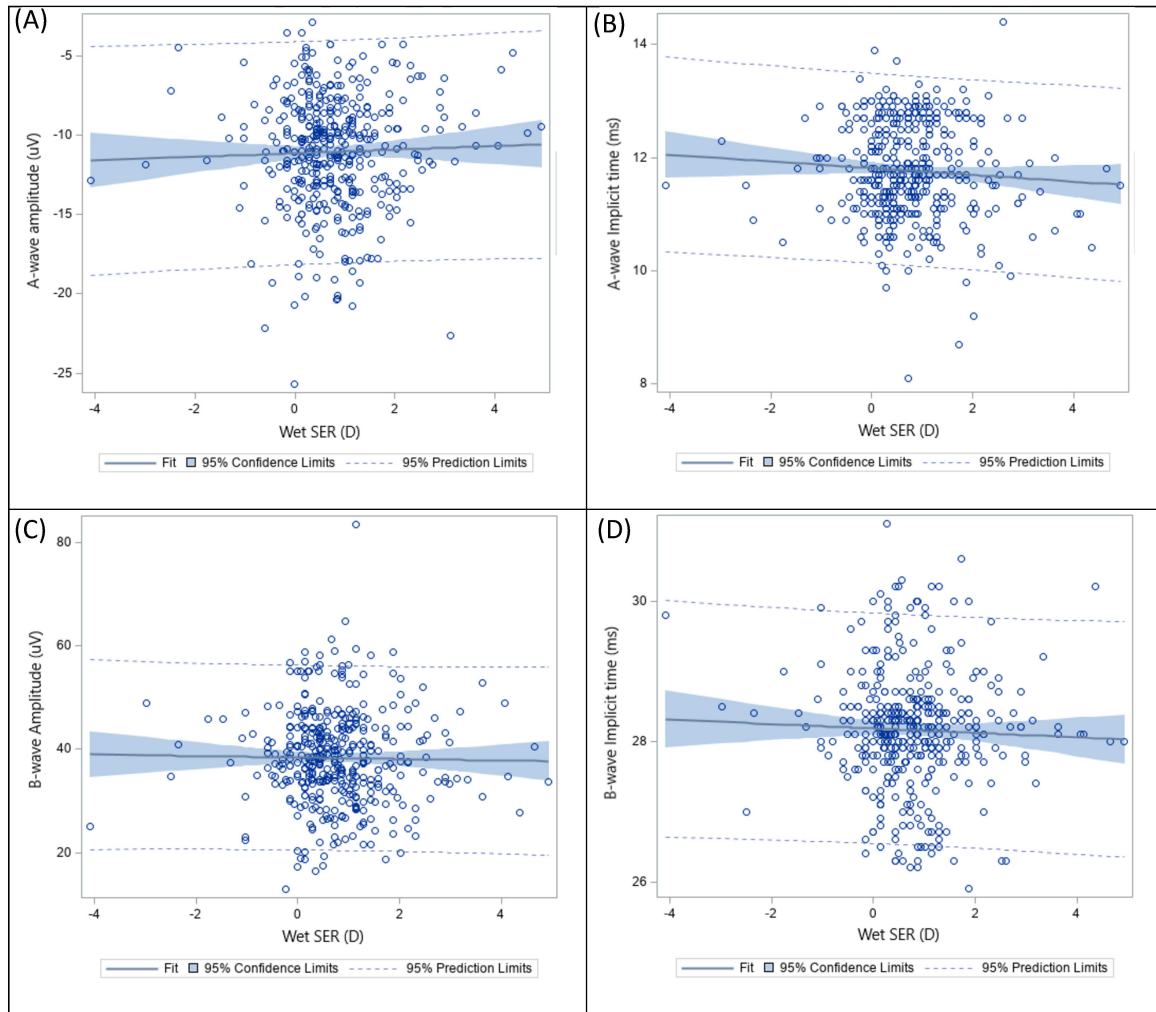


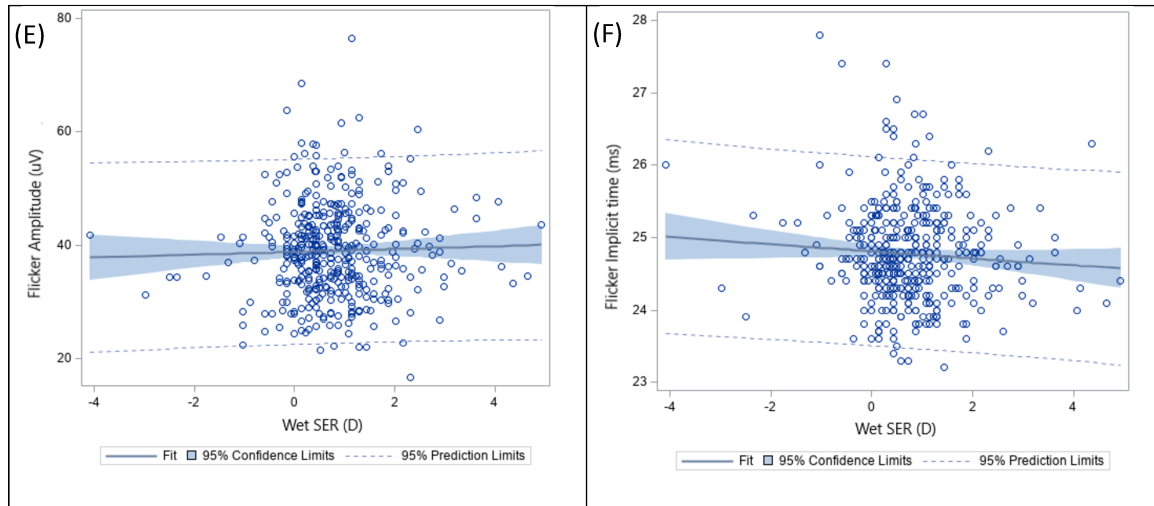
5 [Supplementary Figure 2] Pearson correlation between b-wave implicit time and AL

6



7 [Supplementary Figure 3] Pearson correlations between (A) a-wave amplitude (B) a-wave  
8 implicit time (C) b-wave amplitude (D) b-wave implicit time (E) 30Hz flicker implicit time and  
9 K  
10





11 **[Supplementary Figure 3]** Pearson correlations between (A) a-wave amplitude (B) a-wave  
 12 implicit time (C) b-wave amplitude (D) b-wave implicit time (E) 30Hz flicker amplitude (F)  
 13 30Hz flicker implicit time and K

14

15

16 **[Supplementary Table 1]** The 5<sup>th</sup> – 95<sup>th</sup> percentile range of photopic a- and b-wave responses  
 17 and 30-Hz flicker responses

18

19

20

21

22

23

24

25

	Percentiles				
	5 <sup>th</sup>	25 <sup>th</sup>	50 <sup>th</sup>	75 <sup>th</sup>	95 <sup>th</sup>
<u>Amplitude (µV)</u>					
A-wave	-17.80	-13.00	-10.40	-8.50	-5.40
B-wave	23.22	32.10	37.40	43.20	54.68
30-Hz flicker	26.03	33.33	38.80	43.60	53.00
<u>Implicit time (ms)</u>					
A-wave	10.50	11.20	11.70	12.50	13.00
B-wave	26.70	27.80	28.20	28.50	29.80
30-Hz flicker	23.80	24.35	24.70	25.20	26.00

- 26 **[Supplementary Table 2]** Correlations of a-wave and b-wave of photopic ERG responses, 30-  
 27 Hz flicker responses for AL, K and SER.

	AL		K		SER	
	Correlation coefficient	P value	Correlation coefficient	P value	Correlation coefficient	P value
A-wave Amplitude ( $\mu$ V)	-0.131	0.005*	-0.056	0.253	0.061	0.195
A-wave Implicit time (ms)	0.116	0.014*	0.012	0.800	-0.090	0.057
B-wave Amplitude ( $\mu$ V)	0.148	0.002*	0.070	0.149	-0.020	0.679
B-wave Implicit time (ms)	-0.050	0.285	-0.004	0.930	-0.047	0.321
30-Hz Flicker Amplitude ( $\mu$ V)	0.142	0.003*	0.128	0.010*	0.036	0.456
30-Hz Flicker Implicit time (ms)	-0.100	0.038*	-0.050	0.320	-0.067	0.164

- 28 *An asterisk indicates statistical significance*