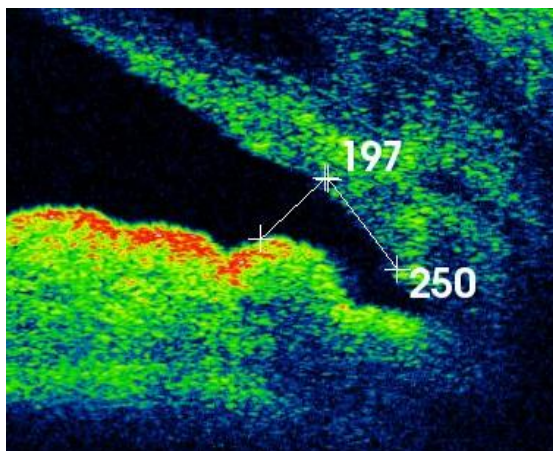
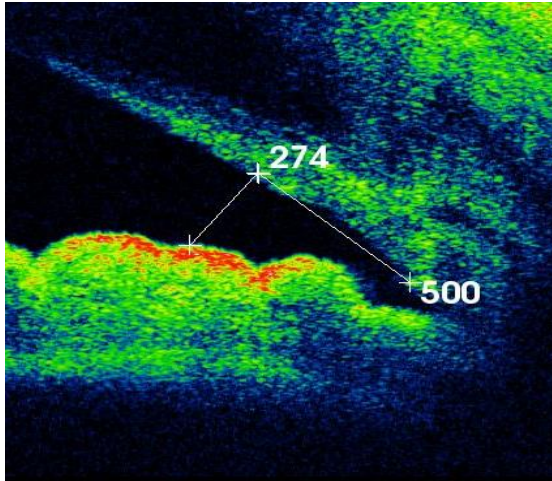


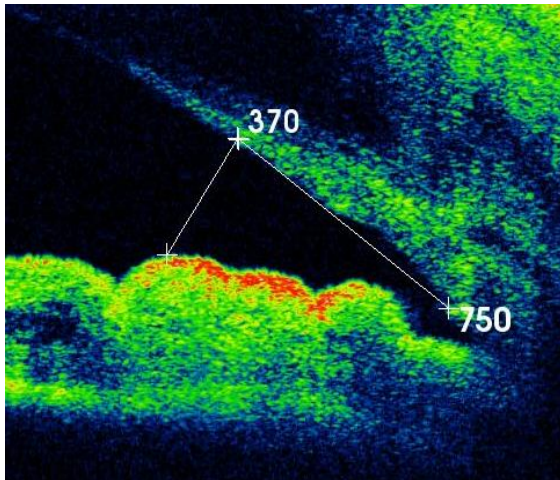
Supplementary Figure 1: Trabecular iris angle (TIA)



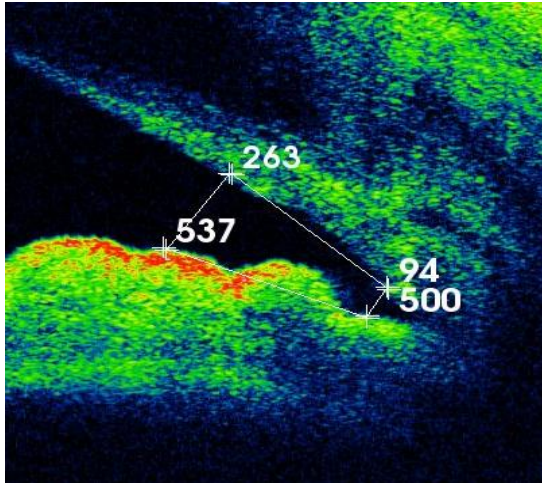
Supplementary Figure 2: Angle Opening distance at 250µm (AOD 250)



Supplementary Figure 3: Angle Opening distance at 500µm (AOD 500)

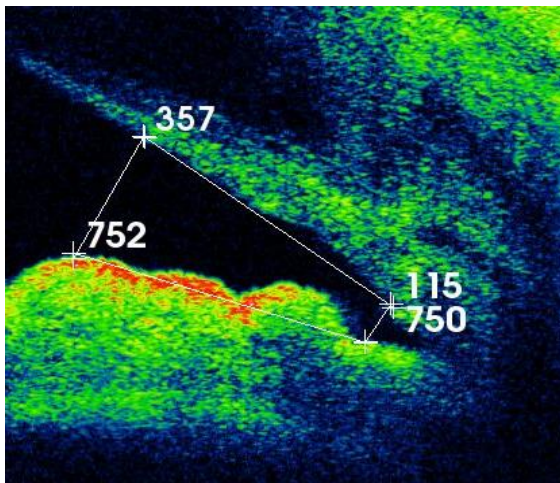


Supplementary Figure 4: Angle Opening distance at 750µm (AOD 750)

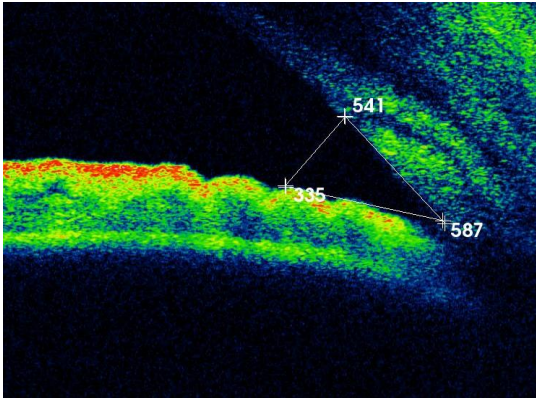


Supplementary Figure 5 Trabecular iris surface area at 500  $\mu\text{m}$  (TISA 500)

.\_\*\*



Supplementary Figure 6 Trabecular iris surface area at 750  $\mu\text{m}$  (TISA 750)



Supplementary Figure 7 Angle recess area at 500  $\mu\text{m}$  (ARA 500)