

# Incidence, progression and risk factors of age-related macular degeneration in 35–95-year-old individuals from three jointly designed German cohort studies

Caroline Brandl ,<sup>1,2</sup> Felix Günther,<sup>1,3</sup> Martina E Zimmermann ,<sup>1</sup> Kathrin I Hartmann,<sup>4</sup> Gregor Eberlein,<sup>4</sup> Teresa Barth,<sup>2</sup> Thomas W Winkler,<sup>1</sup> Birgit Linkohr,<sup>5</sup> Margit Heier,<sup>5,6</sup> Annette Peters,<sup>5,7</sup> Jeany Q Li ,<sup>8</sup> Robert P Finger,<sup>8</sup> Horst Helbig,<sup>2</sup> Bernhard H F Weber,<sup>9</sup> Helmut Küchenhoff,<sup>3</sup> Arthur Mueller,<sup>4</sup> Klaus J Stark,<sup>1</sup> Iris M Heid<sup>1</sup>

**To cite:** Brandl C, Günther F, Zimmermann ME, *et al*. Incidence, progression and risk factors of age-related macular degeneration in 35–95-year-old individuals from three jointly designed German cohort studies. *BMJ Open Ophthalmology* 2022;**7**:e000912. doi:10.1136/bmjophth-2021-000912

► Additional supplemental material is published online only. To view, please visit the journal online (<http://dx.doi.org/10.1136/bmjophth-2021-000912>).

CB and FG contributed equally.

Received 28 September 2021  
Accepted 6 December 2021



© Author(s) (or their employer(s)) 2022. Re-use permitted under CC BY-NC. No commercial re-use. See rights and permissions. Published by BMJ.

For numbered affiliations see end of article.

## Correspondence to

Dr Iris M Heid; [Iris.Heid@klinik.uni-regensburg.de](mailto:Iris.Heid@klinik.uni-regensburg.de)

## ABSTRACT

**Objective** To estimate age-related macular degeneration (AMD) incidence/progression across a wide age range.

**Methods and analysis** AMD at baseline and follow-up (colour fundus imaging, Three Continent AMD Consortium Severity Scale, 3CACSS, clinical classification, CC) was assessed for 1513 individuals aged 35–95 years at baseline from three jointly designed population-based cohorts in Germany: *Kooperative Gesundheitsforschung in der Region Augsburg* (KORA-Fit, KORA-FF4) and *Altersbezogene Untersuchungen zur Gesundheit der Universität Regensburg* (AugUR) with 18-year, 14-year or 3-year follow-up, respectively. Baseline assessment included lifestyle, metabolic and genetic markers. We derived cumulative estimates, rates and risk factor association for: (1) incident early AMD, (2) incident late AMD among no AMD at baseline (definition 1), (3) incident late AMD among no/early AMD at baseline (definition 2), (4) progression from early to late AMD.

**Results** Incidence/progression increased by age, except progression in 70+-year old. We observed 35–55-year-old with 3CACSS-based early AMD who progressed to late AMD. Predominant risk factor for incident late AMD definition 2 was early AMD followed by genetics and smoking. When separating incident late AMD definition 1 from progression (instead of combined as incident late AMD definition 2), estimates help judge an individual's risk based on age and (3CACSS) early AMD status: for example, for a 65-year old, 3-year late AMD risk with no or early AMD is 0.5% or 7%, 3-year early AMD risk is 3%; for an 85-year old, these numbers are 0.5%, 21%, 12%, respectively. For CC-based 'early/intermediate' AMD, incidence was higher, but progression was lower.

**Conclusion** We provide a practical guide for AMD risk for ophthalmology practice and healthcare management and document a late AMD risk for individuals aged <55 years.

## INTRODUCTION

Age-related macular degeneration (AMD) is a degenerative disorder affecting the complex of photoreceptors, retinal pigment epithelium

## Key messages

### What is already known about this subject?

► While there are numerous epidemiological studies with cross-sectional data on age-related macular degeneration (AMD), population-based longitudinal studies and estimates for incidence and progression for AMD are scarce.

### What are the new findings?

► We report incidence of early and late AMD as well as progression and respective risk factors covering a particularly wide age spectrum in three jointly designed cohort studies. By integrating our results with estimates from four other European cohorts, we provide a comprehensive view on incident late AMD. In our data, also younger individuals aged 35–55 years with baseline early AMD exhibited at least a seven-fold increased 18-year cumulative risk for late AMD compared with individuals at the same age without AMD.

### How might these results change the focus of research or clinical practice?

► Our practical guide for ophthalmologists helps judge an individual's risk for late AMD based on age and early AMD status, which is also relevant for healthcare management and clinical trial design. Our results might draw more attention to AMD in the young.

(RPE) and choroid in the central retina.<sup>1</sup> It represents the leading cause of central vision loss in the elderly populations of industrialised countries.<sup>1</sup> Due to population ageing, the number of affected individuals has been projected to increase.<sup>2–3</sup> Epidemiological measures such as prevalence, incidence and progression are key for healthcare management and individuals' risk assessment.

While there are numerous population-based studies with one-time assessment of AMD (cross-sectional studies) estimating

disease prevalence,<sup>2 4-7</sup> there are only few studies with multiple AMD assessments longitudinally.<sup>2 8</sup> A recent meta-analysis of European cohort studies had included 22 studies on AMD prevalence, but only four studies on AMD incidence.<sup>2</sup> In Germany, population-based AMD incidence data are limited to the Gutenberg Health Study with 5-year follow-up.<sup>9</sup>

The current gold standard in epidemiological studies to document early/intermediate and late AMD stages is the grading of colour fundus images of the central retina. On colour fundus images, early AMD is characterised by differently sized yellowish accumulations of extracellular material (drusen) between Bruch's membrane and the RPE or between the RPE and the neurosensory retina. Other features of early/intermediate AMD are RPE abnormalities, including depigmentation or increased amount of pigment.<sup>1</sup> Late AMD can manifest as an atrophic form known as geographic atrophy (GA) or a macular neovascular (MNV) complication characterised by choroidal/(sub)retinal ingrowth of diseased blood vessels and bleeding.<sup>1 10</sup>

While the definition of late AMD is fairly similar across clinical and epidemiological studies, classification systems for early AMD differ in terms of graded features and categories.<sup>11</sup> When comparing the Three Continent AMD Consortium Severity Scale (3CACSS)<sup>12</sup> and the Clinical Classification (CC),<sup>13</sup> substantial differences in early AMD prevalence were documented (17% vs 44%, respectively).<sup>7</sup> A recent assessment of the performance of several classification systems showed that each system had its merits in different settings<sup>11</sup> and that 3CACSS performed best in predicting progression to late AMD.<sup>11 12</sup>

Further challenges pertain to study design: (1) as AMD is frequent only in the elderly, studies in younger adults require long-term follow-up to observe a sufficient number of events, particularly for late AMD and (2) studies in the old-aged require a study programme meeting the needs of the elderly and a shorter follow-up period to avoid high loss from mortality. This renders it difficult to provide AMD cohort data across a wide age range and epidemiologic measures on AMD in a systematic fashion.

We aimed to provide estimates for early and late AMD incidence as well as for progression from early to late AMD in a wide age spectrum. Making use of the research platforms of KORA (Kooperative Gesundheitsforschung in der Region Augsburg) and AugUR (Altersbezogene Untersuchungen zur Gesundheit der Universität Regensburg), we have set up AMD investigation in three population-based cohort studies in parallel. The joint design enabled harmonisation of colour fundus imaging, AMD assessment, AMD grading (3CACSS, CC) and the optimisation of follow-up length according to participants' age: 18-year follow-up for younger adults (KORA-Fit, 35–55 years), 14-year follow-up for older adults (KORA-FF4, 55–75 years) and 3-year follow-up for the old aged (AugUR, 70–95 years). The KORA and AugUR studies are also highly comparable in terms of

recruiting in middle-sized cities in Bavaria, Southern Germany, with participants having similar lifestyle, environment and genetic background.<sup>6 7 14</sup> This enabled us to observe 1513 individuals aged 35–95 years at baseline and ~16 000 person-years, to estimate early/late AMD incidence and progression, and to quantify relative risk from well-established AMD risk factors like age, sex, smoking, high-density lipoprotein cholesterol (HDL-C) and genetic profile.<sup>1 15 16</sup>

## SUBJECTS AND METHODS

### Study populations and study samples

KORA is a research platform recruiting from the population aged 25–74 years living in/around Augsburg, Germany, a city with ~300 000 inhabitants.<sup>17</sup> Details have been described previously.<sup>17 18</sup> In brief, the present analysis is based on the fourth KORA survey (KORA-S4, conducted 1999–2001, n=4261, response=67%).<sup>19</sup> KORA-S4 was conducted in several study centres, one of them equipped for colour fundus imaging, rendering 2842 of the 4261 KORA-S4 participants eligible for the fundus sub-study, of which 2840 participated as reported previously.<sup>6</sup>

The follow-up in the KORA-S4 fundus substudy contained two parts. First, a 14-year follow-up (KORA-FF4, 2013/14)<sup>20</sup> included 1653 participants aged 55–74 years with baseline fundus imaging. Of these, 678 individuals obtained follow-up fundus images (follow-up net response 60%; online supplemental table 1A). Second, an 18-year follow-up (KORA-Fit, 2018/19) included 1831 participants aged 35–55 years with baseline fundus imaging. Of these, 856 obtained follow-up fundus images (follow-up net response 61%; online supplemental table 1B).

AugUR is a research platform recruiting from the mobile elderly population in/around Regensburg, Germany, a study region with ~330 000 inhabitants of mostly Caucasian ancestry comparable to KORA in terms of size, living and environmental conditions as well as genetic background. Study recruitment and conduct were designed according to the procedures from KORA as reported previously.<sup>14</sup> We here report on the first of two AugUR baseline surveys (AugUR1-BL, 2013–2015 n=1133) as described previously.<sup>7</sup> A 3-year follow-up (applied the same procedures (AugUR1-FU1, 2016–2018); all baseline participants were eligible and reinvited. AugUR1-FU1 included 788 participants with fundus imaging (net-follow-up response 77%; online supplemental table 1C). Although follow-up response was high, response at baseline indicated selection towards the mobile elderly as described previously.<sup>7</sup>

The recruitment procedures were the same for KORA<sup>21</sup> and AugUR,<sup>14</sup> since AugUR was designed after the example of KORA: local registries were asked to draw a random sample of individuals residing in the study area (Augsburg or Regensburg, respectively, and selected counties) and having a birth year that met study requirements (25–74 years for KORA, 70+ years for AugUR);

these individuals were asked to participate by a mailed written invitation letter. For KORA, a German passport was required. There were no a priori exclusion criteria.

### Patient and public involvement statement

It was not appropriate or possible to involve patients or the public in the design, or conduct, or reporting, or dissemination plans of our research.

### Assessment of participant characteristics and risk factors at baseline

Data assessment of KORA and AugUR was highly comparable, since KORA served as model when designing the AugUR study. Details on baseline data collection have been described elsewhere.<sup>6 7 14 18 22</sup> In brief, information on lifestyle factors and metabolic parameters was gathered via a standardised face-to-face interview, medical examinations by trained medical staff and laboratory measurements from blood (online supplemental text 1). KORA and AugUR study participants were genotyped and genetic information was imputed. Based on 50 of 52 variants reported for late AMD,<sup>15</sup> we computed a genetic risk score (GRS) by adding the dosages of AMD risk alleles, weighed by the respective variant's published effect size<sup>15</sup> (online supplemental text 1). Askimed (<http://www.askimed.com/>) and SAS were used for data management.

### AMD classification based on colour fundus images

Colour fundus photography of the central retina and AMD feature assessment were conducted as described previously<sup>6 7</sup> (online supplemental text 2). For each eye with gradable colour fundus imaging, AMD status was classified by 3CACSS<sup>12</sup> and CC.<sup>13</sup>

All images, from baseline and follow-up in the three cohorts (KORA-S4, KORA-FF4, KORA-Fit, AugUR1-BL, AugUR1-FU1), were graded for AMD features by the same experienced and trained ophthalmological consultants (CB and TB) as described before.<sup>6 7</sup> Further details on double grading, inter-rater reliability and baseline versus follow-up comparisons are provided in online supplemental text 3.

Assessed features included presence of drusen and pigment abnormalities (hyperpigmentation or depigmentation), drusen size category (small, intermediate, large), total drusen area and presence of GA and/or MNV. Then, we transferred this information into the AMD status according to the 3CACSS and CC classification systems as 'no' (absence of 'early' or 'late'), 'early' (3CACSS: mild, moderate or severe early; CC: early, intermediate) or 'late' AMD (details described in online supplemental text 2) and previously.<sup>6 7</sup>

The AMD status of a person was derived as the AMD status of the eye with the more severe AMD stage ('worse eye') when both eyes were gradable, or as the status of the one available eye otherwise. We analysed individuals with at least one eye gradable at baseline and at follow-up.

### Defining four types of events

All participants with AMD status assessed at baseline and follow-up were included in the present analysis. For each participant, we defined four types of 'events' based on the observed transition from baseline to follow-up AMD status: (1) 'incident early AMD' when the person had 'no AMD' at baseline and 'early AMD' at follow-up, (2) 'incident late AMD (definition-1)' for 'no AMD' at baseline and 'late AMD' at follow-up, (3) 'incident late AMD (definition 2)' for 'no AMD' or 'early AMD' at baseline and 'late AMD' at follow-up and (4) 'progression from early to late AMD' for 'early AMD' at baseline and 'late AMD' at follow-up. Analyses were restricted to the respective 'persons at risk': (1) individuals without AMD at baseline for incident early AMD or incident late AMD (definition 1), (2) individuals with no or early AMD at baseline for incident late AMD (definition 2), (3) individuals with baseline early AMD for progression.

### Statistical analyses

Statistical analyses were carried out in R, V.3.6.3 (R Core Team, 2020) and IBM SPSS Statistics, V.25 (IBM). Descriptive statistics were derived for participants in this longitudinal analysis and those lost-to-follow-up, using logistic regression to test for differences.

We computed cumulative incidence and progression estimates, per study and also by refined age-groups within study, as the number of 'events' divided by the number of 'persons at risk' (online supplemental text 4). Since the classification of 'early AMD' differs between 3CACSS and CC and, consequently, also the classification of 'no AMD' (ie, absence of early and late AMD), we computed cumulative incidence and progression for 3CACSS-based AMD and CC-based AMD. We compared the two classifications of 'early AMD' by positive predictive value (PPV) for late AMD and area under the receiver operating curve (AUROC; online supplemental text 4). We estimated the association of established risk factors; age, sex, smoking, HDL-C and GRS with incident early AMD, incident late AMD (definition 2) or progression, per study, via multiple logistic regression. ORs were tested for difference from unity (online supplemental text 4).

For comparison between our studies and to published studies, we estimated incidence and progression rates per 1000 person-years by study and refined age-groups (online supplemental text 4). The number of events per age-group derived from the individual's baseline age assuming event onset in the middle of follow-up. We conducted sensitivity analyses assuming that events occurred at 2/3 of follow-up. We used incidence/progression rates to derive 1-year and 3-year cumulative incidence/progression according to  $1 - \exp(-t * \text{rate})$ , where *rate* is the rate of the respective event and *t* is the number of years across which events were accumulated (here: 1 or 3 years). We did this by age-group and study and combined across the three studies for the overlapping age-groups.



## RESULTS

### Participant characteristics

Gradable images for AMD for at least one eye at baseline and follow-up were available for 1513 individuals (2901 eyes at baseline, 2869 at follow-up), which comprised the analysed sample (KORA-Fit  $n=506$ , KORA-FF4  $n=350$ , AugUR  $n=657$ ). Analysed participants were 50% women and baseline age ranged from 35 to 95 years (online supplemental table 2). Net follow-up response was 61%, 60% and 71%, respectively (online supplemental table 1). Individuals not participating in follow-up were slightly older and with a slightly less healthy lifestyle (more current smokers, less physically active, higher BMI), but otherwise comparable to the analysed sample, particularly in terms of baseline AMD status (online supplemental table 2). The three jointly designed AMD studies covered the younger, the older and the old-aged adult population (baseline age 34–55 years, 54–75 years, 70–95 years for KORA-Fit, KORA-FF4, AugUR), followed for 18, 14 and 3 years, respectively (age at follow-up 53–73 years, 69–88 years, 73–98 years, online supplemental figure 1).

### Cumulative incidence and progression differ between classification systems

We estimated cumulative AMD incidence and progression by study and refined age-group for the two classification systems, 3CACSS-based and CC-based early AMD ('mild/moderate/severe early' AMD or 'early/intermediate' AMD, respectively). We found lower cumulative incidence for 3CACSS-based early AMD compared with CC-based, but higher progression (eg, KORA FF4: 14-year early AMD incidence 13.9% vs 41.5%, progression 43.8% vs 18.5%, respectively; table 1, online supplemental table 3). Late AMD incidence was similar for definition 1, despite the different group at risk (ie, 'no AMD' as absence of early/late AMD), and exactly the same for definition 2 (as expected, group at risk defined as no/early AMD).

The higher progression from 3CACSS-based early to late AMD compared with CC-based early AMD was also reflected by higher PPVs in the three-category view (online supplemental figure 2A). When extending this to the five-category view for refined AMD categories (3CACSS: no, mild early, moderate early, severe early, late AMD; CC: no AMD, age-related changes, early, intermediate, late AMD), we found a consistent increase in PPVs by increased 3CACSS categories in all three studies, but a PPV near zero for lower CC categories rendering these rather uninformative (online supplemental figure 2A). When evaluating the ability of the two system's no/early AMD categories to discriminate for future late AMD development via AUROC, we found good performance for both systems (AUROC 0.72 to 0.87, online supplemental figure 2B). 3CACSS showed an advantage for old-aged in the three-category view. However, CC-based early AMD identified some younger/older individuals who progressed to late AMD, which was overlooked by

3CACSS (one of eight late AMD cases in younger, 3 of 14 in older individuals); this was at the cost of additional 'false-positives' (reduced specificity, online supplemental figure 2B). This pattern was also seen in the five-category view. We focused the following on 3CACSS.

### Comparing risk factors association for incident early, incident late AMD and progression

We evaluated association of risk factors assessed at baseline (age, sex, smoking, ex-smoking, HDL-C, GRS) with 3CACSS-based cumulative incidence of early and late AMD (definition 2) by study via logistic regression. We also evaluated association with progression in the old aged (AugUR; not in KORA-Fit, KORA FF4 due to sparse numbers). We found the following (figure 1, online supplemental table 4): (1) GRS and age were consistently associated with increased odds for incident early and incident late AMD, (2) for progression (in old aged), GRS showed significant association, but not age, (2) smoking was associated with increased odds for incident late AMD and, for old-aged, also for progression, but not for incident early AMD, (3) baseline early AMD conveyed the most consistent and highest risk for late AMD across studies without and with GRS as covariate (OR from 21.0 to 57.7;  $p<0.002$ ).

The ORs of the GRS were fairly stable across models and studies, higher for incident late AMD (OR 1.9–4.5 per 5% of maximum possible GRS) than for early AMD (OR=1.5–1.9), and OR=2.5 for progression in old aged. For current smoking, we found not only remarkably high ORs (for incident late AMD and, in old-aged, for progression) but also high uncertainty. We found no association for sex, former smoking or baseline HDL-C. The lack of HDL-C association with AMD was not due to adjusting for the GRS, which includes HDL-C-associated genetic variants (in/near *LIPC*, *CETP* genes), since the lack was also observed without GRS as covariate.

### Rates and 3-year risk of incidence and progression as a practical guide for practitioners

To compare estimates between studies with different follow-up lengths, we computed rates per 1000 person-years by study and refined age-group, focused on 3CACSS (15830 person-years overall). This revealed a clear increase by age in the rates of incident early AMD and incident late AMD definition 2 (figure 2A,C, online supplemental table 5A,C). There was almost no increase in rates of incident late AMD definition 1 above the age of 60 years (figure 2B, online supplemental table 5B). Rates of progression also increased by age in the younger and older, but not in old aged (figure 2D, online supplemental table 5D). For these analyses, we assumed the observed event to have occurred at half of follow-up time, but sensitivity analyses assuming occurrence at 2/3 provided very similar results (online supplemental table 6).

Incidence and progression rates are not fully intuitive for interpretation, but can be transformed to, for

**Table 1** Cumulative estimates for incident early AMD, incident late AMD, and progression by study and refined age groups

(A) Cumulative incidence of early AMD					(B) Cumulative incidence of late AMD (definition 1)*		
Study	Age (years)†	N events/n‡	Incidence (%)	95% CI	N events/n‡	Incidence (%)	95% CI
KORA-Fit	All	33/484	6.8	4.7 to 9.4	3/484	0.6	0.1 to 1.8
	(34,45)	15/268	5.6	3.2 to 9.1	0/268	0.0	0.0 to 1.4
	(45,50)	8/136	5.9	2.6 to 11.3	1/136	0.7	0.0 to 4.0
	(50,55)	10/80	12.5	6.2 to 21.8	2/80	2.5	0.3 to 8.7
KORA-FF4	All	46/332	13.9	10.3 to 18.0	7/332	2.1	0.9 to 4.3
	(53,60)	14/149	9.4	5.2 to 15.3	4/149	2.7	0.7 to 6.7
	(60,65)	19/113	16.8	10.4 to 25.0	1/113	0.9	0.0 to 4.8
	(65,75)	13/70	18.6	10.3 to 29.7	2/70	2.9	0.3 to 9.9
AugUR	All	63/518	12.2	9.5 to 15.3	3/518	0.6	0.1 to 1.7
	(70,75)	24/224	10.7	7.0 to 15.5	1/224	0.4	0.0 to 2.5
	(75,80)	22/198	11.1	7.1 to 16.3	1/198	0.5	0.0 to 2.8
	(80,96)	17/96	17.7	10.7 to 26.8	1/96	1.0	0.0 to 5.7
(C) Cumulative incidence of late AMD (definition 2)§					(D) Cumulative progression from early to late AMD		
Study	Age (years)†	N events/n‡	Incidence (%)	95% CI	N events/n‡	Progression (%)	95% CI
KORA-Fit	All	8/506	1.6	0.7 to 3.1	5/22	22.7	7.8 to 45.4
	(34,45)	1/275	0.4	0.0 to 2.0	1/7	14.3	0.4 to 57.9
	(45,50)	2/144	1.4	0.2 to 4.9	1/8	12.5	0.3 to 52.7
	(50,55)	5/87	5.7	1.9 to 12.9	3/7	42.9	9.9 to 81.6
KORA-FF4	All	14/348	4.0	2.2 to 6.7	7/16	43.8	19.8 to 70.1
	(53,60)	4/151	2.6	0.7 to 6.6	0/2	0.0	0.0 to 84.2
	(60,65)	3/120	2.5	0.5 to 7.1	2/7	28.6	3.7 to 71.0
	(65,75)	7/77	9.1	3.7 to 17.8	5/7	71.4	29.0 to 96.3
AugUR	All	23/628	3.7	2.3 to 5.4	20/110	18.2	11.5 to 26.7
	(70,75)	6/267	2.2	0.8 to 4.8	5/43	11.6	3.9 to 25.1
	(75,80)	11/244	4.5	2.3 to 7.9	10/46	21.7	10.9 to 36.4
	(80,96)	6/117	5.1	1.9 to 10.8	5/21	23.8	8.2 to 47.2

Shown are 18 year, 14 year, and 3 year cumulative estimates and 95% CI for incidence and progression for the three studies (KORA-Fit, KORA FF4, AugUR, respectively), overall and by refined age groups. For AMD classification, 3CACSS12 was applied here (analogous estimates for CC36 in online supplemental table 3).

\*Considering individuals with no AMD at baseline (definition 1).

†Age at baseline.

‡Number of events/number of persons at risk.

§Considering individuals with no or early AMD at baseline (definition 2).

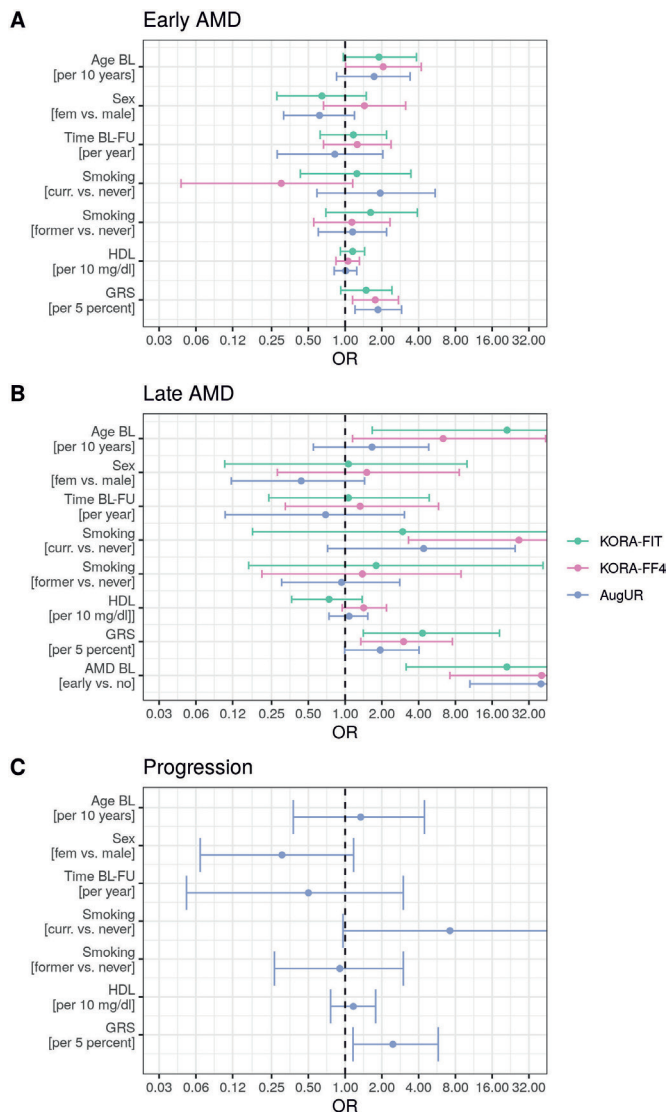
AMD, age-related macular degeneration; AugUR, Altersbezogene Untersuchungen zur Gesundheit der Universität Regensburg; 3CACSS, Three Continent AMD Consortium Severity Scale; KORA-Fit / KORA-FF4, Kooperative Gesundheitsforschung in der Region Augsburg.

example, 3-year cumulative incidence and progression (Methods). The joint analysis across the three studies allowed us to cover age-groups from 35 to 100 years. We derived a side-by-side comparison of 3-year risk for each of the four events (figure 3A–D), with three of these particularly informative given a person's age and early AMD status: risk of early or late AMD (definition 1) among individuals without AMD (figure 3A,B) and risk of late AMD among individuals with early AMD (ie, progression, figure 3D). For example, our data suggested that an individual aged 65 years without AMD had a 3% risk to develop early AMD within the next 3 years and a 0.5% risk to develop late AMD; when the 65-year-old had early AMD, their 3-year risk to progress to late AMD was 7%. For an individual aged 85 years, the numbers were 7%, 0.5% and 21%, respectively. Interestingly, our data

indicated that the 65-year-old and the 85-year-old without early AMD have comparable late AMD risk (ie, 0.5%). While these estimates are subjected to uncertainty, this can be a practical guide to help judge an individual's risk by age and early AMD status.

### Features of early AMD in younger adults are predictive for late AMD development

AMD is commonly defined as a disease-affecting individuals in their sixth decennium and older. In the cross-sectional evaluation of KORA-S4, we had previously detected features resembling early AMD in participants who were markedly younger (as young as <30 years).<sup>6</sup> This had raised the question, whether the detected features were truly AMD-related or artefacts mimicking AMD. For these younger adults with early AMD features, we were



**Figure 1** Risk factor association with incident early age-related macular degeneration (AMD), incident late AMD and progression by study. We conducted logistic regression including age, sex, follow-up time, smoking, former smoking, high-density lipoprotein cholesterol (HDL-C), genetic risk score (GRS) and early AMD at baseline (BL) (as applicable). Shown are OR and 95% CIs for (A) incident early AMD, (B) incident late AMD among those with no or early AMD at baseline (definition 2) and (C) progression for AugUR. For AMD classification, 3CACSS was applied. Detailed results also from other models are shown in online supplemental table 4). AugUR, Altersbezogene Untersuchungen zur Gesundheit der Universität Regensburg; KORA-Fit / KORA-FF4, Kooperative Gesundheitsforschung in der Region Augsburg; FU, follow-up.

now able to assess their risk to progress to late AMD using the 18-year follow-up of KORA-Fit (35–55 years of age at baseline, 53–73 years at follow-up, median follow-up time 18 years): 22.7% of these progressed to late AMD (n=5 of 22; online supplemental table 1D), compared with 0.6% among those without baseline AMD (n=3 of 484). This yielded an unadjusted OR of 47.2 for the 18-year cumulative progression to late AMD comparing individuals

with baseline early AMD with those AMD-free and an OR of 35.0 (95% CI 7.4 to 166.0, p value <0.0001) when adjusting for age and follow-up time. When regrading the AMD status of these 22 individuals, we confirmed baseline early AMD of all 22, late AMD at follow-up for the 5, and early AMD for the other 17.

Our derived 3-year risk of disease and progression demonstrates that a 45-year-old without early AMD has a 0.5% risk to develop early AMD within 3 years (figure 3A) and a practically 0 risk for late AMD (figure 3B); a 45-year-old with early AMD has a 2% risk of progressing to late AMD within 3 years (figure 3D). Such a person might be underdiagnosed, if there is no attention for these early AMD features also in younger individuals and limited awareness that they can progress to late AMD.

## DISCUSSION

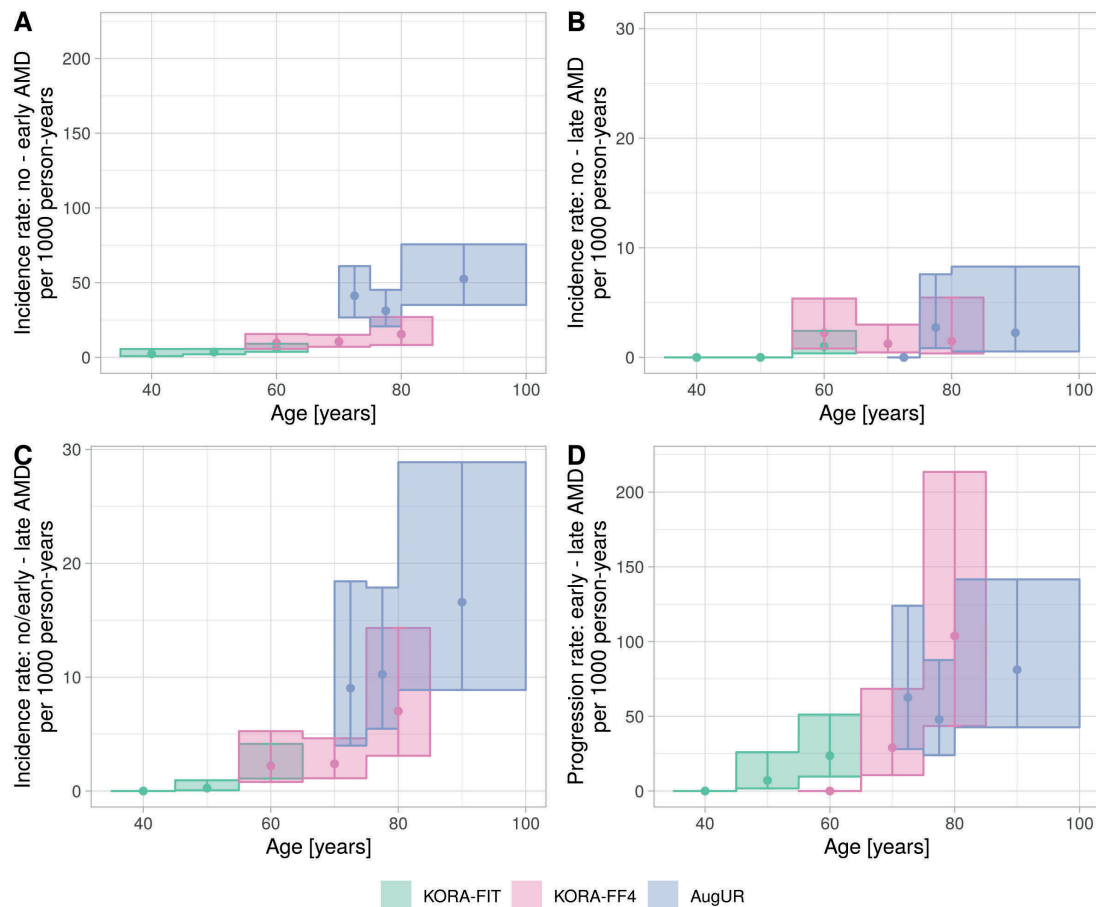
We conducted three population-based, jointly designed cohort studies with >1500 individuals aged 35–95 years at baseline and an 18-year, 14-year or 3-year follow-up, respectively, and derived cumulative estimates for AMD incidence and progression. For 3CACSS compared with CC classification, we found lower incidence of early AMD, but higher progression to late AMD, prompting us to focus on 3CACSS for most of the analyses. Incident and progression rates were estimated by age-groups and the corresponding 3-year risk estimates provide a practical guide for an individual's risk given age and early AMD status. Importantly, we found 22.7% of the 35–55-year old with early AMD at baseline to have progressed to late AMD within 18 years of follow-up. Our systematic analysis of AMD risk factors confirmed age, genetics and current smoking and allowed for a direct comparison of those AMD risk factor associations with incident early and late AMD, and also—focused on the high-aged—for progression.

Our data are unique in its wide age range, covering 35–95 years at baseline and 35–100 years for rate estimation, with a longer follow-up of the younger and older to capture a sufficient number of events as well as a shorter follow-up in the old aged to avoid high loss by mortality.

A clear strength of our data is the highly standardised study procedures across the three studies. Data assessment of KORA and AugUR was highly comparable, since KORA served as model when designing the AugUR study. AMD grading of all colour fundus images—across studies as well as across baseline and follow-up—was performed by the same trained ophthalmologists. Moreover, mild pharmacological mydriasis was applied in the majority of participants aged >70 years, to ascertain high image quality despite old-age-related smaller pupil size.<sup>7</sup>

Our results are also unique by our side-by-side view of estimates for four types of events: incident early AMD next to two definitions of incident late AMD and progression. Most published estimates on incident late AMD were computed among individuals with no



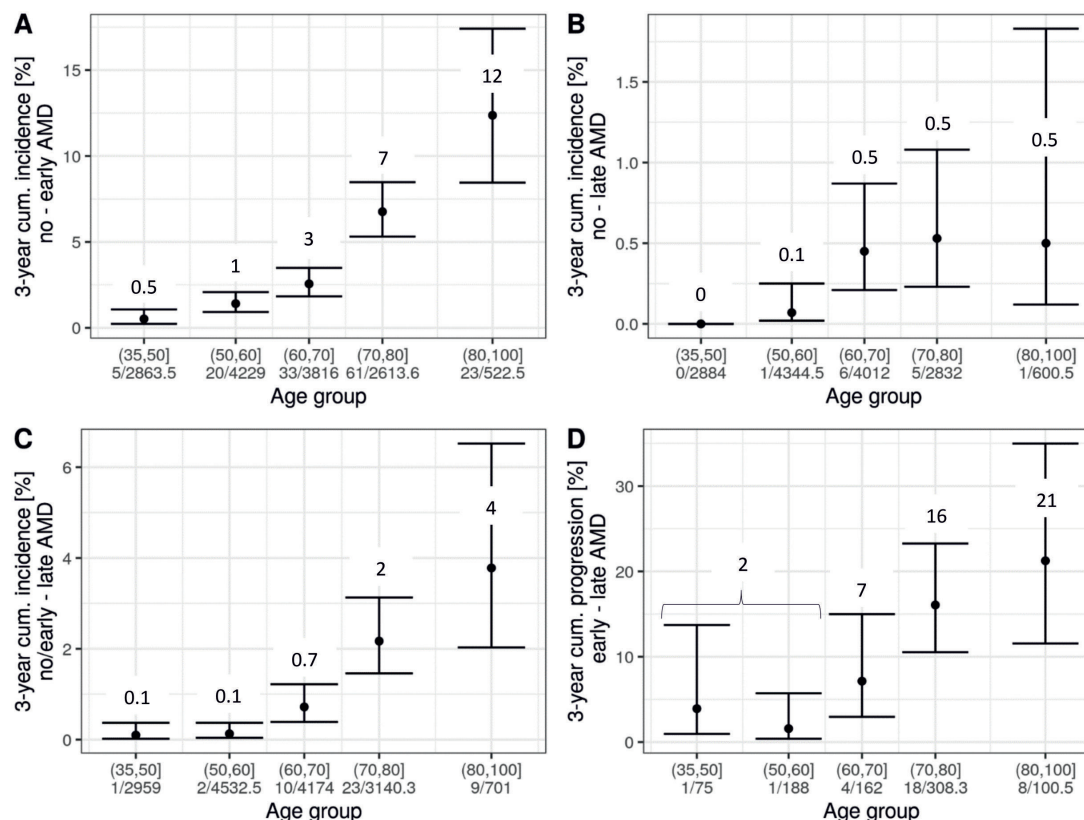


**Figure 2** Rates per 1000 person-years for incident early AMD, incident late AMD and progression by study and refined age groups. Rates per 1000 person-years were derived by 10-year age groups (KORA-Fit, KORA FF4) or 5-year age groups (AugUR) and assuming that the event occurred in the middle of the follow-up time. Shown are estimated rates and 95% CIs for (A) incident early AMD, (B) incident late AMD among individuals with no AMD at baseline (definition 1), (C) incident late AMD among individuals with no or early AMD at baseline (definition 2) and (D) progression from early to late AMD. For AMD classification, 3CACSS was applied. Note the different y-axes scales. AMD, age-related macular degeneration; AugUR, Altersbezogene Untersuchungen zur Gesundheit der Universität Regensburg; KORA-Fit / KORA-FF4, Kooperative Gesundheitsforschung in der Region Augsburg.

or early AMD at baseline (eg, <sup>23–26</sup> which is our late AMD incidence definition 2). It is useful particularly for association analyses, as it includes more individuals at baseline, more events during follow-up and options to model baseline early AMD as covariate. While the term ‘incidence’ might not be fully appropriate, because this type of event includes both, incidence and progression, it is used very often as such in published literature and a comparison should be facilitated. One reason beyond more events is maybe also a reduced issue by different early AMD classification systems: when no AMD and early AMD are taken together to define individuals at risk for late AMD, then different early AMD classification systems do not matter. We also derived late AMD incidence restricted to individuals AMD-free at baseline, our definition 1, which separates incidence from progression: the 3-year risk estimates modelled from rates provide a practical guide for ophthalmology practitioners to help judge the late AMD risk for a person without

early AMD (incident late AMD definition-1) versus a person with early AMD (progression). These estimates are subjected to uncertainty, as indicated by 95% CIs. Also, the modelling of yearly rates required an assumption on the time of onset, since we had only two AMD assessments per participant over time, but alternative onset times yielded similar results. As sample sizes particularly for late AMD were limited in the analyses per age-group, larger meta-analyses across cohort studies with harmonised early AMD classification, for example, within the European Eye Epidemiology consortium, are warranted to improve these estimates.

A challenge to compare estimates for incident early AMD and progression across published studies are the different classification systems for early AMD, with consequences also for the no AMD definition. We have previously highlighted substantial differences in early AMD prevalence for 3CACSS versus CC.<sup>7</sup> Here, we document marked differences longitudinally: incidence for early AMD was lower, but progression to late AMD was



**Figure 3** Three-year risk of incident early AMD, incident late AMD and progression by age groups in the joint analysis. In a joint analysis across the three studies (combining individuals from the same age groups as applicable), 3-year risk estimates by age groups were derived from rates assuming event onset in the middle of follow-up. Shown are estimates and 95% CIs for (A) incident early AMD, (B) incident late AMD among individuals with no AMD at baseline (definition 1), (C) incident late AMD among individuals with no or early AMD at baseline (definition 2) and (D) progression from early to late AMD. Also stated are number of modelled events and person-years at risk. For AMD classification, 3CACSS was applied. Note the different y-axis scales. AMD, age-related macular degeneration; 3CACSS, Three Continent AMD Consortium Severity Scale.

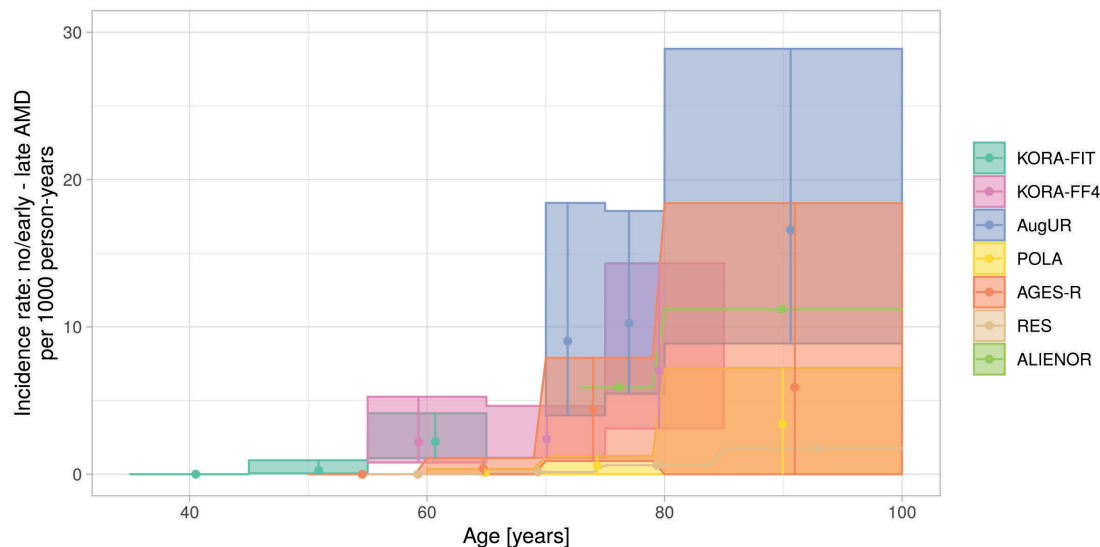
higher for 3CACSS compared with CC, a pattern similarly as found by others.<sup>11</sup> This and previous recommendation<sup>11</sup> prompted us to focus on 3CACSS for most analyses. The different classification systems did not affect incident late AMD definition 2, which was expected, since the group at risk combines no with early AMD and 3CACSS-based early AMD is basically a subgroup of CC-based early AMD<sup>7</sup>; furthermore, they did not affect incident late AMD definition 1, despite the different groups at risk defined as absence of early or late AMD, probably because CC contributed little additional to 3CACSS in terms of prediction.

When comparing our results on late AMD incidence rate definition 2 with the recently published meta-analysis of four European cohorts in 7223 individuals,<sup>2</sup> we found the 95% CIs to overlap: our rates per 1000 person-years were 2.2 (95% CI 1.0 to 4.5) in 55-year old to 65-year old and 11.7 (95% CI 7.8 to 16.8) among 70-year to 100-year old; the published meta-analysis yielded 0.5 (95% CI 0.1 to 2.7) for individuals 50–70 years and 6.7 (95% CI 3.2 to 14.1) for 70–100 years. For a more direct comparison, we gathered age-group-specific estimates from the meta-analysis' authors<sup>2</sup> and embedded our three studies' rates. This yielded incidence rates from overall 8736

individuals covering 35 to 100 years, with the unique estimates in the 35–50-year old from our KORA-Fit study (figure 4). These estimates showed the expected increase by age with considerable variability between studies. To our knowledge, this provides the most comprehensive joint view on late AMD incidence from international population-based cohort studies so far.

Not included in the European meta-analysis was the Copenhagen City Eye Study<sup>27</sup> (n=359, age 60–80 years, Wisconsin Age-Related Maculopathy Grading System): their 14-year cumulative incidence of early and late AMD (definition 2) of 31.5% and 14.8%,<sup>27</sup> respectively, were higher than our 13.9% and 4.6% from KORA FF4 14-year follow-up (slightly younger: 54–75 years, n=350, 3CACSS grading). Worldwide, the only two other long-term AMD studies, Beaver Dam Eye Study<sup>26</sup> and Blue Mountains Eye Study<sup>25</sup> (n=3917 and 1149, age 43–86 and 49+ years, respectively), reported 15-year cumulative incidence of 14.3% and 22.7% for early AMD and 3.1% and 6.8% for late AMD (definition 2),<sup>25 26</sup> which compared well to our KORA FF4 estimates. The Gutenberg Health Study, the only other population-based cohort from Germany<sup>9</sup> (n=6492, age 35–74 years), yielded a 5-year cumulative any





**Figure 4** Comparison of European incidence rates for late AMD among individuals without or with early AMD at baseline. Depicted are estimated incidence rates per 1000 person-years and 95% CIs for incident late AMD among individuals with no or early AMD at baseline. The four longitudinal studies included in the meta-analysis of Li *et al*<sup>2</sup> are compared with KORA-Fit, KORA-FF4 and augur results (as in figure 2C). AGES-R, Age, Gene/Environment Susceptibility-Reykjavik Study; ALIENOR, Antioxydants, Lipids Essentiels, Nutrition et Maladies Oculaires Study; AMD, age-related macular degeneration; AugUR, Altersbezogene Untersuchungen zur Gesundheit der Universität Regensburg; KORA-Fit / KORA-FF4, Kooperative Gesundheitsforschung in der Region Augsburg; POLA, Pathologies Oculaires Liées à l'Age Study; RES, Rotterdam Eye Study.

AMD incidence among individuals AMD free at baseline (1.7%, 69 early or late AMD events); our longer follow-up in the younger/older and the inclusion of old aged enabled us to report on two times as many any AMD events (n=142) despite a smaller sample size. Population-based cohort studies on progression cover diverse aspects of transition to more severe stages.<sup>24–26</sup>

Clinically very important is our observation that a relevant fraction, 22.7%, of the 35-year to 55-year-old with 3CACSS-based early AMD at baseline progressed to late AMD within 18 years of follow-up. This suggests that the baseline-identified features in these relatively young individuals were not purely phenotypes mimicking AMD or other preceding retinal changes, but also reflected—at least in part—‘truly’ early AMD, and that AMD is not solely relevant at old age. Our data demonstrate that these 35–55-year old with baseline early AMD exhibited at least a sevenfold increased 18-year cumulative risk for late AMD compared with individuals at the same age without AMD. As we had only 22 individuals with early AMD at that age, which was also reflected in the broad 95% CI, further studies are warranted. If substantiated, this should help draw attention to critical early AMD in the moderately aged and their risk for progression. This may be pivotal for timely diagnosis and therapy to help prevent vision loss in the middle of life.

Our association analyses were systematic for incident early AMD, incident late AMD definition-2, as well as progression. We confirmed known risk factors: age, genetic profile and early AMD at baseline.<sup>28 29</sup> As the GRS was consistently significantly associated with increased odds for incident early and incident late AMD as well as

for progression in old aged, our data support the potential usefulness of genetic testing in subjects with early AMD to help identify individuals at particularly high risk for progression to late AMD. We found smoking with a remarkably high cumulative 3-year risk for progression in individuals aged 70+, but only for current smoking at baseline (OR=7.2, 95% CI (1.0 to 67.2), p=0.06) and not for former smoking. This renders help to stop smoking a potentially effective prevention of progression also at old age. Limited number of events possibly hampered the detection of HDL-C association,<sup>28</sup> but power is an issue for virtually all AMD cohort studies when analysed separately. We also found no association of sex and AMD incidence/progression. In the published literature, HDL-C and sex are both highly debated risk factors, mostly based on cross-sectional studies: some studies have implicated female sex or high HDL-C as associated with AMD, some have not and some have shown the opposite.<sup>30–33</sup> Regarding longitudinal data, the Beaver Dam Eye Study<sup>34</sup> or the Blue Mountains Eye Study<sup>25</sup> showed female sex as a risk factor for early AMD incidence, but not for late AMD incidence; also, for example, not in the whole study population of the Beaver Dam Eye Study but only in women 75 years of age or older. Importantly, a recent approach using longitudinal data to develop a prediction model for incident late AMD applies a machine learning algorithm that allows the selection of the most predictive risk factors automatically. This approach also did not detect/include sex or HDL-C.<sup>29</sup>

Some limitations warrant mentioning: we need to acknowledge a selection at baseline towards the mobile elderly population in our old-aged AugUR participants due to the recruitment strategy; participants

were required to come to the study centre, to conduct a 3-hour study programme, and to answer interview questions personally.<sup>7</sup> However, follow-up response was high at 71% and baseline AMD frequencies did not differ between follow-up participants and drop outs. With regards to AMD assessment, the utilisation of colour fundus photography rather than optical coherence tomography or further multimodal imaging is a noteworthy limitation: smaller lesions might have been missed; multimodal imaging data can provide more and better reproducible information. Shorter follow-up intervals would have improved the uncertainty in estimating incidence rates. Missingness of image data for one of the two eyes of a participant can lead to biased estimates.<sup>7 35</sup> However, the one-eye missingness was only 4% at baseline and 5% at follow-up and the bias, thus, limited.

In summary, we addressed incidence of early and late AMD as well as progression and provide results covering a particularly wide age spectrum. Our results in younger adults contribute uniquely to the existing literature and our joint view integrating our three studies' results to four other European cohorts is, to our knowledge, the most comprehensive view on incident late AMD to date. Our practical guide for 3-year risk of AMD incidence and progression is relevant for healthcare management, clinical trial design and patient counselling: given the age and existence/non-existence of early AMD, an ophthalmologist can judge the individual's risk to develop late AMD within 3 years. Large joint efforts to combine cohort study data are warranted to decrease uncertainty in estimates. While it is already routine practice to pay attention to individuals with early AMD  $\geq 50$  years of age to enable timely diagnosis and therapy for late AMD, our work may help to extend this attention to early AMD in individuals aged  $< 50$  years.

#### Author affiliations

<sup>1</sup>Department of Genetic Epidemiology, University of Regensburg, Regensburg, Germany

<sup>2</sup>Department of Ophthalmology, University Hospital Regensburg, Regensburg, Germany

<sup>3</sup>Statistical Consulting Unit StaBLab, Department of Statistics, Ludwig Maximilians University Munich, Munich, Germany

<sup>4</sup>Department of Ophthalmology, University Hospital Augsburg, Augsburg, Germany

<sup>5</sup>Institute for Epidemiology, Helmholtz Zentrum München Deutsches Forschungszentrum für Gesundheit und Umwelt, Neuherberg, Germany

<sup>6</sup>KORA Study Centre, University Hospital Augsburg, Augsburg, Germany

<sup>7</sup>Chair of Epidemiology, Institute for Medical Information Processing, Biometry and Epidemiology, Medical Faculty, Ludwig Maximilians University Munich, Munich, Germany

<sup>8</sup>Department of Ophthalmology, University Hospital Bonn, Bonn, Germany

<sup>9</sup>Institute of Human Genetics, University of Regensburg, Regensburg, Germany

**Acknowledgements** We gratefully acknowledge the excellent supporting assistance of Lydia Mayerhofer, Magdalena Scharl, Josef Simon and Sylvia Pfreintner. Moreover, we thank all study participants for contributing to the KORA and AugUR study.

**Contributors** CB: eye sub-study coordinator for AugUR and KORA, manuscript writing, grading of colour fundus images, statistical analysis, interpreting results. FG: advanced statistical modelling, manuscript writing. MEZ: data management, statistical analysis. KIH: imaging and processing of KORA-Fit participants with

non-gradable images in study centre. GE: imaging and processing of KORA-Fit participants with non-gradable images in study center. TB: second grading of colour fundus images. BL: KORA study conduct, data management. MH: KORA study conduct. AP: KORA study principal investigator, scientific oversight over KORA study conduct. JQL: providing refined age group specific incidence estimates from meta-analysis. RPF: providing refined age group specific incidence estimates from meta-analysis, manuscript writing. HH: manuscript writing, ophthalmological expertise. BHFU: AugUR study initiation and supervision, manuscript writing. HK: manuscript writing, advanced statistical modelling. AM: manuscript writing, ophthalmological expertise. KJS: AugUR study coordinator, manuscript writing, data management, statistical analysis, interpreting results. IMH: AugUR study principal investigator, project initiation and supervision, manuscript writing, interpreting results. Guarantor: IMH. All authors contributed to the reviewing and editing of the manuscript.

**Funding** The KORA study was initiated and financed by the Helmholtz Zentrum München—German Research Centre for Environmental Health, which is funded by the German Federal Ministry of Education and Research (BMBF) and by the State of Bavaria. The AugUR study and analyses are supported by grants from the German Federal Ministry of Education and Research (BMBF 01ER1206, BMBF 01ER1507 to IMH), by the Deutsche Forschungsgemeinschaft (DFG, German Research Foundation; HE 3690/7–1 and HE 3690/5–1 to IMH, BR 6028/2–1 to CB), by the National Institutes of Health (NIH R01 EY RES 511967 to IMH.), by the PRO RETINA Foundation (Brandl.1–2017 to CB) and institutional budget (Institute of Human Genetics, Department of Genetic Epidemiology, University of Regensburg).

**Disclaimer** The sponsors or funding organisations had no role in the design or conduct of this research.

**Competing interests** TB is a member of the advisory board of Novartis; this is unrelated to the work presented here. RPF is a consultant for Novartis, Bayer, Roche/Genentech, Allergan, Alimera, Böhlinger-Ingelheim, Chiesi, ProQR, Opthea and Inositec, and receives research support from Novartis, Biogen, Zeiss Meditec, Heidelberg Engineering and Centrevue; none of this has any relation to the presented work. HH received honoraria for lectures and advisory boards unrelated to this work from Alcon, Allergan, Apellis, Bayer, Novartis and Theopharm. BHFU has cooperation agreements for projects unrelated to this work with Alcon, Allergan, Apellis, Gensight Biologics, Novartis, Shire, F. Hoffmann-La Roche and ModernaTX, and is a member of the clinical advisory board of Gyroscope Therapeutics. IMH has received support from Roche Diagnostics for a project related to age-related macular degeneration, but unrelated to this work presented here. No conflicting relationship exists for the other authors.

**Patient consent for publication** Consent obtained directly from patient(s)

**Ethics approval** This study involves human participants and was approved by The Ethics Committee of the Bavarian Chamber of Physicians, Munich, approved the KORA study including its baseline and follow-up surveys (KORA-S4: EC Number 99186, for genetic epidemiological questions 05004; KORA FF4: EC Number 06068; KORA-Fit: EC Number 17040), which also comply with the Declaration of Helsinki and its later amendments. All participants gave written informed consent for participation in the study. The AugUR study was approved by the Ethics Committee of the University of Regensburg, Germany (vote 12-101-0258). The study complies with the Declaration of Helsinki and its later amendments. All participants provided informed written consent. Participants gave informed consent to participate in the study before taking part.

**Provenance and peer review** Not commissioned; externally peer reviewed.

**Data availability statement** Data are available upon reasonable request. The datasets generated and analysed are not publicly available due to data privacy of study participants, but are available upon reasonable request.

**Supplemental material** This content has been supplied by the author(s). It has not been vetted by BMJ Publishing Group Limited (BMJ) and may not have been peer-reviewed. Any opinions or recommendations discussed are solely those of the author(s) and are not endorsed by BMJ. BMJ disclaims all liability and responsibility arising from any reliance placed on the content. Where the content includes any translated material, BMJ does not warrant the accuracy and reliability of the translations (including but not limited to local regulations, clinical guidelines, terminology, drug names and drug dosages), and is not responsible for any error and/or omissions arising from translation and adaptation or otherwise.

**Open access** This is an open access article distributed in accordance with the Creative Commons Attribution Non Commercial (CC BY-NC 4.0) license, which permits others to distribute, remix, adapt, build upon this work non-commercially, and license their derivative works on different terms, provided the original work is

properly cited, appropriate credit is given, any changes made indicated, and the use is non-commercial. See: <http://creativecommons.org/licenses/by-nc/4.0/>.

## ORCID iDs

Caroline Brandl <http://orcid.org/0000-0001-8223-6137>

Martina E Zimmermann <http://orcid.org/0000-0002-6916-4404>

Jeany Q Li <http://orcid.org/0000-0002-9771-3431>

## REFERENCES

- Lim LS, Mitchell P, Seddon JM, *et al*. Age-related macular degeneration. *Lancet* 2012;379:1728–38.
- Li JQ, Welchowski T, Schmid M, *et al*. Prevalence and incidence of age-related macular degeneration in Europe: a systematic review and meta-analysis. *Br J Ophthalmol* 2020;104:1077–84.
- Wong WL, Su X, Li X, *et al*. Global prevalence of age-related macular degeneration and disease burden projection for 2020 and 2040: a systematic review and meta-analysis. *Lancet Glob Health* 2014;2:e106–16.
- Colijn JM, Buitendijk GHS, Prokofyeva E, *et al*. Prevalence of age-related macular degeneration in Europe: the past and the future. *Ophthalmology* 2017;124:1753–1763.
- Korb CA, Kottler UB, Wolfram C, *et al*. Prevalence of age-related macular degeneration in a large European cohort: results from the population-based Gutenberg health study. *Graefes Arch Clin Exp Ophthalmol* 2014;52:1403–11.
- Brandl C, Breinlich V, Stark KJ, *et al*. Features of age-related macular degeneration in the general adults and their dependency on age, sex, and smoking: results from the German KorA study. *PLoS One* 2016;11:e0167181.
- Brandl C, Zimmermann ME, Günther F, *et al*. On the impact of different approaches to classify age-related macular degeneration: results from the German augur study. *Sci Rep* 2018;8:1–10.
- Tomany SC, Wang JJ, Van Leeuwen R, *et al*. Risk factors for incident age-related macular degeneration: pooled findings from 3 continents. *Ophthalmology* 2004;111:1280–7.
- Fieß A, Elbaz H, Korb CA, *et al*. Low birth weight is linked to age-related macular degeneration: results from the population-based Gutenberg health study (GHS). *Investig Ophthalmol Vis Sci* 2019;60:4943–50.
- Spaide RF, Jaffe GJ, Sarraf D, *et al*. Consensus Nomenclature for reporting neovascular age-related macular degeneration data: consensus on neovascular age-related macular degeneration nomenclature Study Group. *Ophthalmology* 2020;127:616–36.
- Thee EF, Meester-Smoor MA, Luttikhuisen DT, *et al*. Performance of classification systems for age-related macular degeneration in the Rotterdam study. *Transl Vis Sci Technol* 2020;9:26.
- Klein R, Meuer SM, Myers CE, *et al*. Harmonizing the classification of age-related macular degeneration in the three-continent AMD Consortium. *Ophthalmic Epidemiol* 2014;21:14–23.
- Ferris FL, Wilkinson CP, Bird A, *et al*. Clinical classification of age-related macular degeneration. *Ophthalmology* 2013;120:844–51.
- Stark K, Olden M, Brandl C, *et al*. The German augur study: study protocol of a prospective study to investigate chronic diseases in the elderly. *BMC Geriatr* 2015;15:130.
- Fritsche LG, Igl W, Bailey JNC, *et al*. A large genome-wide association study of age-related macular degeneration highlights contributions of rare and common variants. *Nat Genet* 2016;48:134–43.
- Winkler TW, Grassmann F, Brandl C, *et al*. Genome-Wide association meta-analysis for early age-related macular degeneration highlights novel loci and insights for advanced disease. *BMC Med Genomics* 2020;13:120–18.
- Holle R, Happich M, Löwel H, *et al*. KORa - A Research Platform for Population Based Health Research. *Gesundheitswesen* 2005;67:19–25.
- Wichmann H-E, Gieger C, Illig T, *et al*. KORa-gen--resource for population genetics, controls and a broad spectrum of disease phenotypes. *Gesundheitswesen* 2005;67 Suppl 1:26–30.
- Stratmann B, Xu T, Meisinger C, *et al*. PLA1A2 platelet polymorphism predicts mortality in prediabetic subjects of the population based KorA S4-Cohort. *Cardiovasc Diabetol* 2014;13:90.
- Kowall B, Rathmann W, Stang A, *et al*. Perceived risk of diabetes seriously underestimates actual diabetes risk: the KorA FF4 study. *PLoS One* 2017;12:e0171152–75.
- Peters A, Döring A, Ladwig K-H. Multimorbidität und erfolgreiches Altern. *Z Gerontol Geriatr* 2011;44.
- Holle R, Happich M, Löwel H, *et al*. KORa--a research platform for population based health research. *Gesundheitswesen* 2005;67 Suppl 1:19–25.
- Delcourt C, Lacroux A. Related Macular Degeneration : The “ Pathologies Oculaires Liées l' Age ”. *Specialist* 2005;924–6.
- Klaver CC, Assink JJ, van Leeuwen R, *et al*. Incidence and progression rates of age-related maculopathy: the Rotterdam study. *Invest Ophthalmol Vis Sci* 2001;42:2237–41.
- Joachim N, Mitchell P, Burlutsky G, *et al*. The incidence and progression of age-related macular degeneration over 15 years: the blue Mountains eye study. *Ophthalmology* 2015;122:2482–9.
- Klein R, Klein BEK, Knudtson MD, *et al*. Fifteen-year cumulative incidence of age-related macular degeneration: the Beaver dam eye study. *Ophthalmology* 2007;114:253–62.
- Buch H, Nielsen NV, Vinding T, *et al*. 14-Year incidence, progression, and visual morbidity of age-related maculopathy: the Copenhagen City eye study. *Ophthalmology* 2005;112:787–98.
- Heesterbeek TJ, Lorés-Motta L, Hoyng CB, *et al*. Risk factors for progression of age-related macular degeneration. *Ophthalmic Physiol Opt* 2020;40:140–70.
- Ajana S, Coughnard-Grégoire A, Colijn JM, *et al*. Predicting Progression to Advanced Age-Related Macular Degeneration from Clinical, Genetic, and Lifestyle Factors Using Machine Learning. *Ophthalmology* 2021;128:587–97.
- Mitchell P, Smith W, Attebo K, *et al*. Prevalence of age-related maculopathy in Australia. the blue Mountains eye study. *Ophthalmology* 1995;102:1450–60.
- Friedman DS, O'Colmain BJ, Muñoz B, *et al*. Prevalence of age-related macular degeneration in the United States. *Arch Ophthalmol* 2004;122:564–72.
- Fraser-Bell S, Donofrio J, Wu J, *et al*. Sociodemographic factors and age-related macular degeneration in Latinos: the Los Angeles Latino eye study. *Am J Ophthalmol* 2005;139:30–8.
- Colijn JM, den Hollander AI, Demirkan A, *et al*. Increased high-density lipoprotein levels associated with age-related macular degeneration: evidence from the EYE-RISK and European eye epidemiology consortia. *Ophthalmology* 2019;126:393–406.
- Klein R, Klein BE, Jensen SC, *et al*. The five-year incidence and progression of age-related maculopathy: the Beaver dam eye study. *Ophthalmology* 1997;104:7–21.
- Günther F, Brandl C, Heid IM, *et al*. Response misclassification in studies on bilateral diseases. *Biom J* 2019;61:1033–1048.



# Incidence, progression, and risk factors of age-related macular degeneration in 35- to 95-year-old individuals from three jointly designed German cohort studies

Brandl et al., 2021

## SUPPLEMENTARY MATERIAL

### Content

Supplementary Table 1.	Response- and participant-proportions in the KORA and AugUR follow-up enrolment.
Supplementary Text 1.	Details on the assessment of lifestyle, metabolic parameters, and genetic risk score.
Supplementary Text 2.	Details on the acquisition, processing, and grading of color fundus images.
Supplementary Text 3.	Details on double grading and baseline versus follow-up comparisons.
Supplementary Text 4.	Details on statistical analyses.
Supplementary Table 2.	Baseline characteristics of analyzed subjects compared to participants not in follow-up.
Supplementary Figure 1.	Age distribution of analyzed KORA and AugUR study participants.
Supplementary Table 3.	Cumulative estimates for incident early AMD, incident late AMD, and progression by study and refined age-groups based on the Clinical Classification (CC).

Supplementary Figure 2.	Comparing two classification systems for prediction of late AMD development.
Supplementary Table 4.	Risk factor association with incident early AMD, incident late AMD, and progression.
Supplementary Table 5.	Incidence and progression rates as well as derived 1-year and 3-year risk.
Supplementary Table 6.	Sensitivity analyses with alternative onset of events for incidence and progression rates and derived 1-year and 3-year risk.

## References

**Supplementary Table 1. Response- and participant-proportions in the KORA and AugUR follow-up enrolment.** Shown are the numbers and percentages of the total baseline sample, the net sample of follow-up participants, the final number of follow-up participants included in this analysis (i.e. color fundus images gradable for AMD for at least one eye at baseline and follow-up) for **(A)** KORA-Fit, **(B)** KORA-FF4 and **(C)** AugUR. Also shown are telephone-based self-reported reasons for non-response.

<b>(A) KORA-Fit</b>	<b>Number</b>	<b>Gross sample</b>	<b>Net sample</b>
	n	%	%
<b>Baseline participants (KORA-S4) eligible for fundus sub-study (i.e. examined in study center equipped with fundus camera)<sup>1</sup></b>	<b>1831</b>	<b>100%</b>	
Died	73		
Not agreed to re-contact	123		
Consent withdrawn	6		
Moved outside the study area	226		
Moved, unknown destiny, postal return	9		
<b>Net sample</b>	<b>1394</b>	<b>76.13 %</b>	<b>100%</b>
No contact	102		
No participation due to health reasons	44		
Nursing case	5		
No sufficient communication possible	0		
Health reasons not further specified	39		
Refusal to participate	291		
No time, dependents in need of care	10		
No time, not specified	55		
Lack of interest	104		
Following medical expert suggestion	3		
Without giving reasons	119		
<b>Follow-up participants</b>	<b>957</b>	<b>52.27%</b>	<b>68.65%</b>
<b>Examined at study center until August 2<sup>nd</sup>, 2018 and thus eligible for the fundus sub-study</b>	<b>856</b>	<b>46.75%</b>	<b>61.40%</b>
<b>Of those: re-examined at University Eye Clinic Augsburg</b>	<b>50</b>		
<b>Color fundus images acquired for at least one eye in baseline and follow-up</b>	<b>856</b>		
<b>Color fundus images gradable for AMD for at least one eye in baseline and follow-up (analyzed sample)</b>	<b>506</b>		



Supplementary Table 1 continued.

(B) KORA-FF4	Number	Gross sample	Net sample
	n	%	%
<b>Baseline participants (KORA-S4) eligible for fundus sub-study (i.e. examined in study center equipped with fundus camera)<sup>1</sup></b>	<b>1653</b>	<b>100%</b>	
Died	376		
Not agreed to re-contact	86		
Consent withdrawn	3		
Moved outside the study area	50		
Moved, unknown destiny, postal return	2		
<b>Net sample</b>	<b>1136</b>	<b>68.72%</b>	<b>100%</b>
No contact	33		
No participation due to health reasons	208		
Nursing case	31		
No sufficient communication possible	0		
Health reasons not further specified	177		
Refusal to participate	217		
No time, dependents in need of care	35		
No time, not specified	18		
Lack of interest	77		
Following medical expert suggestion	3		
Without giving reasons	84		
<b>Follow-up participants examined at study center</b>	<b>678</b>	<b>41.02%</b>	<b>59.68%</b>
<b>Color fundus images acquired for at least one eye in baseline and follow-up</b>	<b>678</b>		
<b>Color fundus images gradable for AMD for at least one eye in baseline and follow-up (analyzed sample)</b>	<b>350</b>		

Supplementary Table 1 continued.

(C) AugUR	Number	Gross sample	Net sample
	n	%	%
<b>Baseline participants examined at study center</b>	<b>1133</b>	<b>100%</b>	
Died	67		
Not agreed to re-contact	3		
Consent withdrawn	0		
Moved outside the study area	5		
Moved, unknown destiny, postal return	32		
<b>Net sample</b>	<b>1026</b>	<b>90.56%</b>	<b>100%</b>
No participation due to health reasons	121		
Nursing case	22		
No sufficient communication possible	1		
Health reasons not further specified	98		
Refusal to participate	117		
No time, dependents in need of care	4		
No time, not specified	9		
Lack of interest	89		
Following medical expert suggestion	1		
Without giving reasons	14		
<b>Follow-up participants</b>	<b>788</b>	<b>69.55%</b>	<b>76.80%</b>
<b>Interview-based questionnaire via telephone</b>	<b>55</b>		
<b>Examined at study center</b>	<b>733</b>	<b>64.70%</b>	<b>71.44%</b>
<b>Color fundus images acquired for at least one eye in baseline and follow-up</b>	<b>733</b>		
<b>Color fundus images gradable for AMD for at least one eye in baseline and follow-up (analyzed sample)</b>	<b>657</b>		

**Supplementary Text 1. Details on the assessment of lifestyle, metabolic parameters, and genetic risk score.**

Information on lifestyle factors (smoking, physical activity, healthy diet), as well as metabolic parameters (body-mass-index [BMI], type 2 diabetes mellitus [T2DM], hypertension, high and low density lipoprotein cholesterol [HDL-C, LDL-C]) were gathered via a standardized face-to-face interview and medical exams by trained medical staff as well as laboratory measurements. Participants were classified as current smokers (including regular smokers, currently smoking  $\geq 1$  cigarette per day, and occasional smokers, currently smoking  $< 1$  cigarette per day), ex-smokers, and never smokers. Physical activity was assessed as regular activity during leisure time in summer and/or winter weekly for  $\geq 1$  hour (active) or less (not active).<sup>2</sup> A score for healthy diet was computed based on a 24-item standardized questionnaire<sup>3</sup> and dichotomized at the median of 15.00 (healthy diet: score  $\geq 15.00$ , no healthy diet: score  $< 15.00$ ). BMI ( $\text{kg m}^{-2}$ ) was computed based on measured weight in kg (in light clothing, to nearest 0.1 kg) and height in m (to nearest 0.5 cm) as weight divided by squared body height.<sup>4</sup> T2DM was assessed as self-reported type 2 diabetes or reported anti-diabetic therapy intake.<sup>1</sup> Hypertension was assessed as actually measured systolic blood pressure of  $\geq 140$  mmHg, diastolic blood pressure of  $\geq 90$  mmHg or corresponding medication taken, given that the participants were aware of having hypertension.<sup>1</sup> HDL-C and LDL-C was measured as described previously.<sup>5</sup>

For genetic data, KORA and AugUR study participants were genotyped via the Affymetrix Axiom (Thermo Fisher Scientific, Santa Clara, California, USA) or the Illumina Infinium Global Screening Array (Illumina, San Diego, California, USA) and genetic information was imputed (1000 Genomes Reference panel, phase 3, version 5).<sup>6</sup> We derived information for 50 of 52 variants identified from case-control studies for late AMD<sup>7</sup> (49 variants directly and a proxy for rs142450006, rs1888235, with  $r^2=0.96$  in IAMDGC data<sup>7</sup>). The variants rs121913059 and rs141853578 were rare (minor allele frequency in IAMDGC  $\leq 1\%$ ) and unavailable in AugUR and KORA. Most of these 50 genetic variants were also documented



risk factors for early AMD.<sup>8</sup> We computed a genetic risk score (GRS) by adding the dosages of AMD risk alleles, weighed by the respective variant's effect size (log odds ratio from fully conditioned regression model<sup>7</sup>) and divided by the theoretical maximum of the weighted sum (i.e., the sum of two times the effect size for each variant). This resulted in a percentage of the (maximum) GRS for each study participant, ranging theoretically from 0% to 100%, observed from 32.0% to 54.0% (mean±standard deviation: 43.3±3.9, 43.1±3.9, 43.7±3.7 for KORA-Fit, KORA-FF4 and AugUR, respectively).

### **Supplementary Text 2. Details on the acquisition, processing, and grading of color fundus images.**

In order to achieve comparable image quality across all three studies and all follow-up visits, the same camera type, settings and protocol were used in all studies/visits conducted in 2013-2019. KORA-S4 was conducted in 1999-2001; here, color fundus images of the central retina were acquired using the 45° non-mydratic TRC-NW5S fundus camera (Topcon, Willich, Germany). As described previously<sup>1</sup>, at least one non-stereoscopic color fundus photograph of the central retina of each eye, including full macular region and optic disc, was acquired. Images were available as .jpg-files with a resolution of 768 x 576 pixels. In AugUR1-BL, AugUR1-FU1, KORA-FF4 and KORA-Fit, conducted in 2013-2019, the automatized DRS camera (Digital Retinography System; CenterVue, Padova, Italy) with identical settings was applied as described before<sup>9,10</sup>: at least two color fundus images of each eye were acquired capturing the central or the central nasal field of the retina within a 45° view, including the full macular region and optic disc. Color fundus images were exported as .jpg-files with a resolution of 2,592 x 1,944 pixels from the DRS camera.

As it is known that the quality of fundus photography depends on pupil size and that pupil size decreases with age<sup>11</sup>, mild pharmacological mydriasis was administered for the majority of the individuals aged 70+ as described previously.<sup>9</sup> Additionally, KORA-Fit participants with non-gradable images for at least one eye were re-invited to the Department of Ophthalmology, University Hospital Augsburg, where a total of 50 individuals were then re-

examined in mild mydriasis using the Zeiss FF450 plus color fundus camera (Carl Zeiss AG, Oberkochen, Germany; **Supplementary Table 1A**).

The following steps of processing and grading were exactly the same across the three studies and for baseline and follow-up. (1) All images were imported into the K-DRS software, a self-developed application for image analysis: images are displayed with a standardized front end on a 27 inch color-calibrated monitor, information on quality and grading can be entered, and results are linked with image number, participant identifier (IDGenerator<sup>12</sup>). (2) All images were assessed for gradability and for AMD by the same grader (C.B.). (3) Images were defined as gradable for AMD, if they fulfilled the following quality criteria allowing for the assessment of AMD: sufficient brightness and color contrast as well as full macular region captured. Images were excluded from AMD grading, if they revealed obscuring lesions (e.g. cataract) or lesions considered to be the result of a competing retinal disease hampering AMD grading (such as advanced diabetic retinopathy, high myopia, trauma, congenital diseases, or photocoagulation unrelated to choroidal neovascularization). (4) Details of assessing AMD features for each eye have been described previously<sup>1,9</sup>: The presence of drusen and pigment abnormalities (hyperpigmentation or depigmentation) on color fundus images was assessed. Only lesions within 2 standard disc diameters (approx. 3000  $\mu\text{m}$ ) of the centre of the macula/fovea were considered. To determine drusen size category (small, intermediate, large), the smallest drusen diameter was compared to the width of a major branch retinal vein crossing the optic disc margin, considered to be approximately one-twelfth disc diameter (i.e. 125  $\mu\text{m}$ , assuming the average disc diameter to be 1500  $\mu\text{m}$ ). Drusen were defined as small drusen when their diameter were  $\leq$  half the diameter of the vein (i.e.  $\leq 63 \mu\text{m}$ ), as large drusen for  $\geq$  full diameter of the vein (i.e.  $\geq 125 \mu\text{m}$ ), and as intermediate drusen if anything in between ( $> 63 \mu\text{m}$  and  $< 125 \mu\text{m}$ ). For borderline findings, the K-DRS image analysis software semi-automatically facilitated the measurement of drusen diameter, when the two distant points of the smallest drusen diameter were manually clicked by the grader. To assess total drusen area, the K-DRS software allowed for digitally placing a circle with 650  $\mu\text{m}$  in diameter on the image, which helped the grader to categorize total drusen area as  $<$  or  $\geq$  the circle area. GA was defined as

an area of RPE atrophy  $\geq$  a circle with 350  $\mu\text{m}$  in diameter, central or paracentral localization, and the presence of at least two of the following features: sharply demarcated border, lack of RPE, visible choroidal vessels, and circular shape. Pure GA was defined if central or paracentral GA, but no MNV was present; pure MNV was defined if MNV, but no GA was present; mixed GA/MNV was defined if both, GA and MNV were detected. This information on the assessed AMD features was then transferred into AMD stages for each eye at baseline and follow-up by a SAS-algorithm, according to two well-established classification systems: (i) the Three Continent AMD Consortium Severity Scale (3CACSS)<sup>13</sup>, which separates mild early from moderate or severe early AMD stages depending on drusen size, drusen area, or the presence of pigmentary abnormalities and (ii) the Clinical Classification (CC)<sup>14</sup>, which distinguishes between early and intermediate AMD depending on the presence of large drusen and/or pigmentary abnormalities (further details as described previously<sup>9</sup>). These two classification systems differ in how they define “early” or “intermediate” AMD, but the definition of late AMD as presence of GA and/or MNV is fairly similar. (5) AMD status of a participant was derived as the AMD status of the eye with the more severe AMD stage (“worse eye”) when both eyes were gradable, and as the grade of the one available eye otherwise. Participants with gradable images for at least one eye at baseline and follow-up were included in the present analysis.

Of note, among the analyzed KORA subjects, eight participants had available AMD status in Fit as well as FF4 (same AMD status) and we chose to assign these individuals to KORA-Fit (younger age at baseline, longer time to follow-up).

### **Supplementary Text 3. Details on double grading and baseline versus follow-up comparisons.**

All images, from baseline and follow-up in each of the three studies (KORA-S4, KORA-FF4, KORA-Fit, AugUR1-BL, AugUR1-FU1), were graded for AMD features by the same experienced and trained ophthalmological consultant (C.B.) as described before<sup>1,9</sup>; questionable findings were discussed with a second trained grader (ophthalmological

consultant, T.B.). Double grading was performed by these two graders for AugUR, KORA-S4 and FF4; inter-rater reliability was high in AugUR (quadratic weighted kappa=0.97)<sup>9,15</sup>, as well as in KORA (quadratic weighted kappa=0.80 and 0.91 for KORA-S4 and KORA-FF4, respectively).

Initially, images were graded sequentially and independently for baseline and follow-up, i.e. the grader was masked for the follow-up or baseline grading, respectively. Images that showed regression in AMD status in follow-up compared to baseline were re-graded comparatively in a side-by-side view to evaluate potential misclassification.<sup>16</sup> Regression from early to no AMD was found in 32 participants (e.g. for 3CACSS: n=8, n=3, n=21 in KORA-Fit, KORA-FF4 and AugUR, respectively), regression from late to early/no AMD in one participant (KORA-Fit). After the update via the side-by-side comparison, regression from early to no AMD remained in six participants (n=0, n=1 and n=5 participants of KORA-Fit, KORA-FF4, and AugUR, respectively). These results were used for further analysis.

#### **Supplementary Text 4. Details on statistical analyses.**

We computed cumulative incidence and progression estimates, per study and also by refined five- to ten-year age-groups within study, as the number of “events” divided by the number of “persons at risk”, as defined above.

The classification of “early AMD” differs between 3CACSS and CC and, consequently, also the classification of “no AMD” (i.e. absence of early and late AMD). The “late AMD” classification is basically the same. We thus computed cumulative incidence and progression for 3CACSS-based AMD and for CC-based AMD. We compared the two classifications of “early AMD” by computing the Positive Predictive Value (PPV) for late AMD as the ratio of the total number of incident late AMD cases among individuals with the respective no/early AMD category divided by the total number of persons within that particular category. We also computed the sensitivity and specificity of no/early AMD baseline categories (consecutively combined based on increasing severity) to predict late AMD development and the respective area under the receiver operating curve (AUROC).

We estimated the association of reported risk factors with incident early AMD, incident late AMD (definition-2), or progression, for each study separately. For this, we applied multiple logistic regression including all risk factors as covariates with early AMD (yes/no) or late AMD (yes/no) at follow-up as outcome and restricting the respective analyses to no AMD at baseline (incident early), no/early AMD at baseline (incident late definition-2), or early AMD at baseline (progression), respectively. Odds ratios (OR) were derived and tested for statistically significant difference from unity. Association with progression was only computed in AugUR, since the number of participants with progression from early to late AMD in the other two studies was not sufficient for stable association estimation. All models were adjusted for the individual's time in follow-up, which was close to 18-year, 14-years, or 3-years in the three studies.

For comparison between our studies and to published studies, we estimated incidence and progression rates per 1,000 person-years by study and refined age-groups. For each age-group, the rate is derived as the fraction of the number of events divided by the number of person-years at risk, multiplied by 1,000. Each individual contributed the number of years at risk to one or several age-groups corresponding to the person's age at baseline and follow-up, which covered the age range of 35 years up to nearly 100 years (minimum baseline age and maximum age at follow-up).



**Supplementary Table 2. Baseline characteristics of analyzed subjects compared to participants not in follow-up.** Shown are baseline characteristics for subjects with available AMD status at baseline and follow-up (i.e. gradable color fundus images for at least one eye at baseline and follow-up; =analyzed subjects) and for eligible subjects with available AMD status at baseline but not at follow-up (=no follow-up). Also indicated is a significant P-value for difference via logistic regression adjusting for age and/or sex (where applicable).

	KORA-Fit		KORA-FF4		AugUR	
	Analyzed (n=506)	No follow-up (n=675)	Analyzed (n=350)	No follow-up (n=566)	Analyzed (n=657)	No follow-up (n=383)
<b>General characteristics</b>						
Age [years] at BL, mean $\pm$ SD (min-max)	44.6 $\pm$ 5.5 (35-55)	44.9 $\pm$ 6.4 (35-55)	61.9 $\pm$ 4.8 (54 <sup>h</sup> -75)	64.4 $\pm$ 5.5*** (55-75)	76.6 $\pm$ 4.4 (70-95)	79.1 $\pm$ 5.7*** (70-94)
Men, % (n)	44.3 (224)	51.6 (348)*	52.9 (185)	52.8 (299)	56.3 (370)	50.7 (194)*
<b>Lifestyle factors</b>						
Current smoker <sup>a</sup> , % (n)	26.3 (133)	39.1 (263)**	14.6 (51)	18.4 (104)**	5.5 (36)	7.3 (28)*
Ex-smoker, % (n)	37.8 (191)	28.9 (194)	39.1 (137)	40.4 (228)	38.5 (253)	36.6 (140)
Physically active <sup>b</sup> , % (n)	59.1 (299)	48.4 (322)**	49.6 (173)	41.3 (231)*	95.0 (624)	90.9 (348)
Healthy diet <sup>c</sup> , % (n)	57.5 (291)	51.3 (341)	64.2 (224)	69.3 (388)	71.4 (469)	64.2 (246)**
<b>Metabolic parameters</b>						
BMI [kg/m <sup>2</sup> ] <sup>d</sup> , mean $\pm$ SD	26.5 $\pm$ 4.5	27.3 $\pm$ 5.1*	27.8 $\pm$ 4.0	28.5 $\pm$ 4.5*	27.9 $\pm$ 4.4	28.1 $\pm$ 4.5
T2DM <sup>e</sup> , % (n)	1.6 (8)	3.0 (20)	4.0 (14)	8.9 (50)*	20.9 (137)	20.6 (79)
Hypertension <sup>f</sup> , % (n)	29.3 (148)	33.5 (223)	50.4 (176)	57.65 (324)	73.5 (482)	71.7 (273)
HDL-C [mg/dl], mean $\pm$ SD	58.9 $\pm$ 17.6	56.1 $\pm$ 17.3	57.5 $\pm$ 16.0	57.5 $\pm$ 16.9	59.0 $\pm$ 14.8	59.7 $\pm$ 15.5
LDL-C [mg/dl], mean $\pm$ SD	131.1 $\pm$ 39.6	137.7 $\pm$ 41.8*	149.1 $\pm$ 40.2	154.9 $\pm$ 41.3*	144.7 $\pm$ 33.5	147.1 $\pm$ 35.4
<b>AMD status at baseline</b>						
Early AMD <sup>g</sup> , % (n)	8.9 (45)	10.1 (68)	15.7 (55)	17.1 (97)	16.7 (110)	16.2 (62)
Late AMD, % (n)	0.2 (1)	0.0 (0)	0.0 (0)	0.9 (5)	4.4 (29)	8.9 (34)

Abbreviations: BL = baseline; SD = standard deviation; BMI = body-mass-index; T2DM = type 2 diabetes; HDL-C, LDL-C = high and low density lipoprotein cholesterol; AMD=age-related macular degeneration; NA = data not available;

P-value for difference adjusted for age and sex: \*) P=0,05-0,01; \*\*) P=0,01-0,001; \*\*\*) P<0,001

<sup>a</sup>) regular smokers currently smoking  $\geq$  1 cigarette day or occasional smokers with < 1 cigarette per day;

<sup>b</sup>)  $\geq$  1 hour of regular activity per week during leisure time in summer and/or winter;

<sup>c</sup>) healthy diet score above the median score of 15;

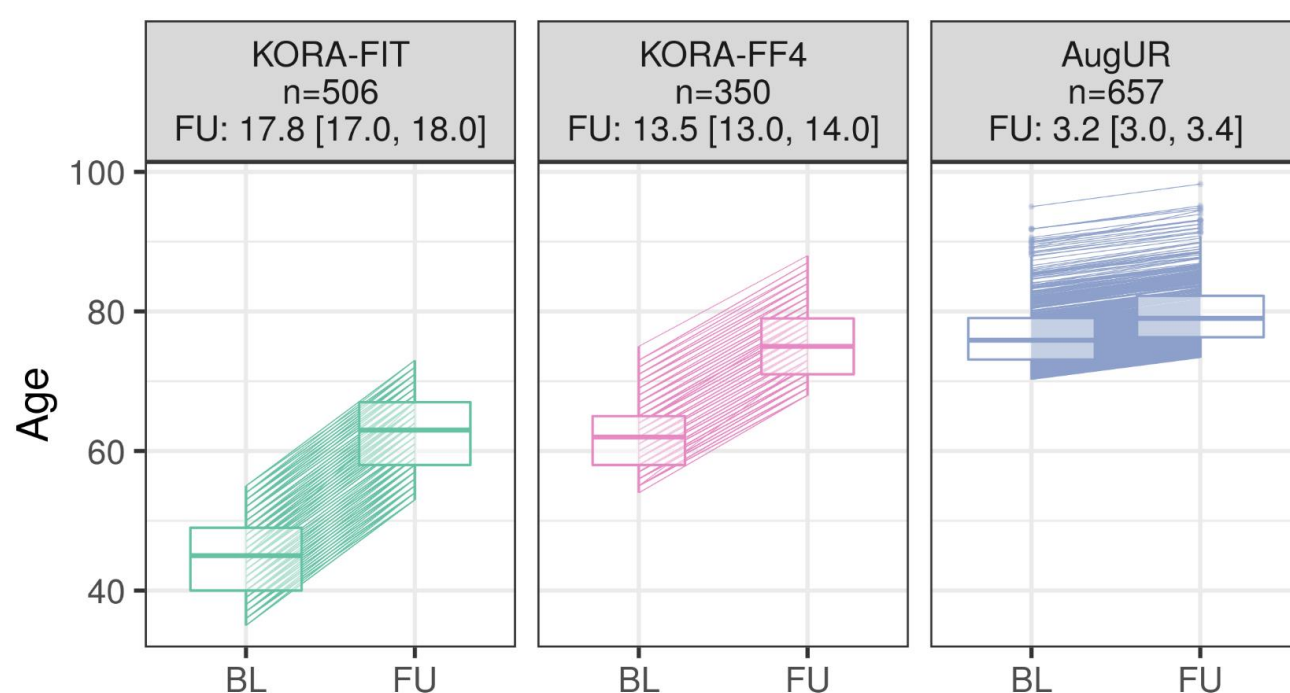
<sup>d</sup>) measured weight divided by squared measured body height;

<sup>e</sup>) self-reported diagnosis of T2DM or anti-diabetes medication intake;

<sup>f</sup>) measured systolic blood pressure of  $\geq$  140 mmHg, diastolic blood pressure of  $\geq$  90 mmHg or corresponding medication taken, given that the participants were aware of having hypertension;

<sup>g</sup>) for AugUR, based on Three Continent AMD Consortium Severity Scale with "mild/moderate/severe early AMD" collapsed to "early AMD"<sup>11</sup>; for KORA, based on extended AREDs 9stepSeverity Scale (step 1=no AMD, step 2-9 early AMD, step 10-12 late AMD)<sup>1</sup>, because AMD grading of participants not in follow-up was available only with this scale; <sup>h</sup>) minimum age of 54 years for the analyzed sample is due to rounding effects of the age at exam;

**Supplementary Figure 1. Age distribution of analyzed KORA and AugUR study participants.** Depicted are numbers of individuals, mean follow-up time [25<sup>th</sup> and 75<sup>th</sup> percentile], age at baseline and follow-up for each of the three studies: the younger adults (baseline age 35-55 years; KORA-FIT), the older adults (54-75 years; KORA-FF4) and the old-aged (70-95 years; AugUR).



**Supplementary Table 3. Cumulative estimates for incident early AMD, incident late AMD, and progression by study and refined age-groups based on the Clinical Classification (CC).** Shown are 18-year, 14-year, and 3-year cumulative estimates and 95%-confidence intervals (CI) for incidence and progression for the three studies (KORA-Fit, KORA FF4, AugUR, respectively), overall and by refined age-groups. For AMD classification, CC<sup>14</sup> was applied here (analogous estimates for 3CACSS<sup>13</sup> in **Table 1**).

A) Cumulative incidence of early AMD					B) Cumulative incidence of late AMD (definition-1) <sup>c</sup>		
Study	Age [years] <sup>a</sup>	N events / n <sup>b</sup>	Incidence (%)	95%-CI	N events / n <sup>b</sup>	Incidence (%)	95%-CI
KORA-Fit	All	104 / 432	24.1	[20.1, 28.4]	2 / 432	0.5	[0.1, 1.7]
	[34,45]	54 / 244	22.1	[17.1, 27.9]	0 / 244	0.0	[0.0, 1.5]
	[45,50]	28 / 121	23.1	[16.0, 31.7]	1 / 121	0.8	[0.0, 4.5]
	[50,55]	22 / 67	32.8	[21.8, 45.4]	1 / 67	1.5	[0.0, 8.0]
KORA-FF4	All	122 / 294	41.5	[35.8, 47.4]	4 / 294	1.4	[0.4, 3.4]
	[53,60]	53 / 133	39.8	[31.5, 48.7]	1 / 133	0.8	[0.0, 4.1]
	[60,65]	43 / 100	43.0	[33.1, 53.3]	1 / 100	1.0	[0.0, 5.4]
	[65,75]	26 / 61	42.6	[30.0, 55.9]	2 / 61	3.3	[0.4, 11.3]
AugUR	All	61 / 353	17.3	[13.5, 21.6]	3 / 353	0.8	[0.2, 2.5]
	[70,75]	26 / 166	15.7	[10.5, 22.1]	1 / 166	0.6	[0.0, 3.3]
	[75,80]	18 / 130	13.8	[ 8.4, 21.0]	1 / 130	0.8	[0.0, 4.2]
	[80,96]	17 / 57	29.8	[18.4, 43.4]	1 / 57	1.8	[0.0, 9.4]

C) Cumulative incidence of late AMD (definition-2) <sup>d</sup>					D) Cumulative progression from early to late AMD		
Study	Age [years] <sup>a</sup>	N events / n <sup>b</sup>	Incidence (%)	95%-CI	N events / n <sup>b</sup>	Progression (%)	95%-CI
KORA-Fit	All	8 / 506	1.6	[0.7, 3.1]	6 / 76	8.1	[3.0, 16.8]
	[34,45]	1 / 275	0.4	[0.0, 2.0]	1 / 31	3.2	[0.1, 16.7]
	[45,50]	2 / 144	1.4	[0.2, 4.9]	1 / 23	4.3	[0.1, 21.9]
	[50,55]	5 / 87	5.7	[1.9, 12.9]	4 / 20	20.0	[5.7, 43.7]
KORA-FF4	All	14 / 348	4.0	[2.2, 6.7]	10 / 54	18.5	[9.3, 31.4]
	[53,60]	4 / 151	2.6	[0.7, 6.6]	3 / 18	16.7	[3.6, 41.4]
	[60,65]	3 / 120	2.5	[0.5, 7.1]	2 / 20	10.0	[1.2, 31.7]
	[65,75]	7 / 77	9.1	[3.7, 17.8]	5 / 16	31.2	[11.0, 58.7]
AugUR	All	23 / 628	3.7	[2.3, 5.4]	20 / 275	7.3	[4.5, 11.0]
	[70,75]	6 / 267	2.2	[0.8, 4.8]	5 / 101	5.0	[1.6, 11.2]
	[75,80]	11 / 244	4.5	[2.3, 7.9]	10 / 114	8.8	[4.3, 15.5]
	[80,96]	6 / 177	5.1	[1.9, 10.8]	5 / 60	8.3	[2.8, 18.4]

<sup>a</sup>) age at baseline

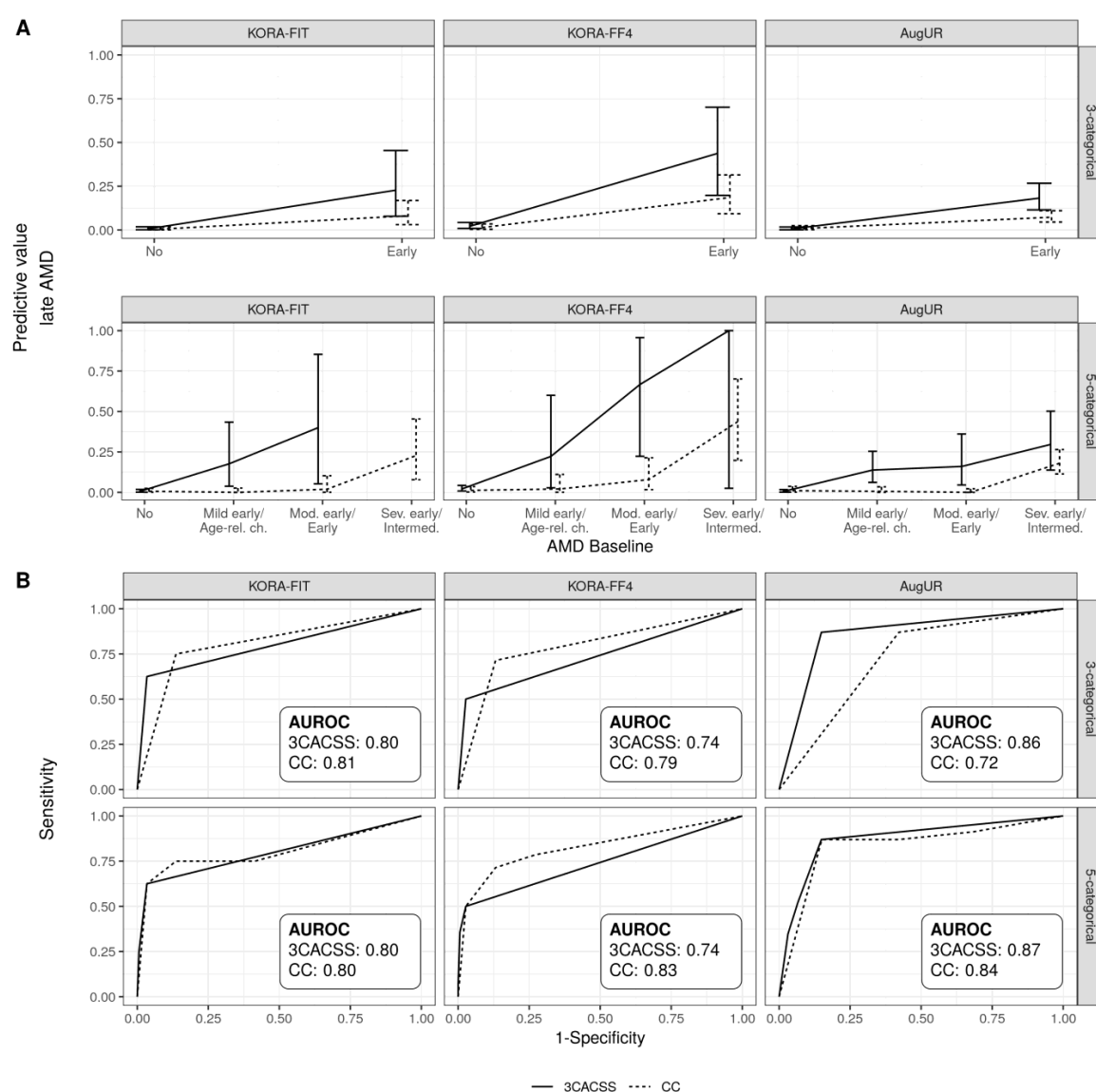
<sup>b</sup>) number of events / number of persons at risk

<sup>c</sup>) considering individuals with no AMD at baseline (definition-1);

<sup>d</sup>) considering individuals with no or early AMD at baseline (definition-2);

**Supplementary Figure 2. Comparing two classification systems for prediction of late AMD**

**development.** An individual's no or early AMD classification at baseline can be considered a screening test to predict development of late AMD. We evaluated 3CACSS<sup>13</sup> and CC<sup>17</sup> as 3-category and 5-category version. For each of the three studies (18-, 14-, or 3-year follow-up, respectively), we derived **(A)** positive predictive value (PPV) for incident late AMD by baseline categories for no/early AMD (i.e. cumulative number of incident late AMD cases per no/early AMD category at baseline divided by total number of persons in the category). We also provide **(B)** sensitivity and 1-specificity per baseline category to discriminate correctly who developed late AMD during follow-up (sensitivity) or wrongly those who did not (1-specificity) and area-under-the-curve of the receiver-operating characteristics (AUROC) as measure for discriminatory ability.



**Supplementary Table 4. Risk factor association with incident early AMD, incident late AMD, and progression.** We estimated absolute risk (i.e. probability, Prob, of an individual to be in the reference group) and relative risk (Odds Ratios, OR) including 95%-confidence intervals (CI) and P-values via logistic regression models. Shown are estimates of **(A)** incident early, **(B)** incident late AMD (definition-2), and **(C)** progression. Covariates were age, sex, follow-up (FU) time, smoking, HDL-C (model I), adding the 50-variant genetic risk score (GRS) (model II) and, for (B), also early AMD at baseline (BL; 3CACSS, without and with GRS, model III and IV, respectively). Model II results for incident early AMD and progression and Model IV results for incident late AMD are depicted in **Figure 1**.

**(A) Incident early AMD** (among individuals with no AMD at baseline)

	Model I*			Model II**		
	Prob/OR	95%-CI	P-value	Prob/OR	95%-CI	P-value
<b>KORA-Fit</b>						
Reference, Prob(event)	0.1	[0.0, 0.1]	-	0.1	[0.0, 0.1]	-
Age [10 years, centered]	1.9	[1.0, 3.8]	0.06	1.9	[1.0, 3.8]	0.07
Sex [female vs. male]	0.6	[0.3, 1.4]	0.25	0.6	[0.3, 1.5]	0.31
FU time [per year, centered]	1.2	[0.6, 2.2]	0.57	1.2	[0.6, 2.2]	0.62
Smoking [current vs. never]	1.2	[0.4, 3.2]	0.78	1.2	[0.4, 3.5]	0.67
Smoking [former vs. never]	1.5	[0.7, 3.7]	0.31	1.6	[0.7, 3.9]	0.27
HDL-C [per 10 mg/dl, centered]	1.2	[0.9, 1.4]	0.23	1.2	[0.9, 1.4]	0.22
GRS [per 5%, b-weighted, centered]	-	-	-	1.5	[0.9, 2.4]	0.11
<b>KORA-FF4</b>						
Reference, Prob(event)	0.1	[0.1, 0.2]	-	0.1	[0.1, 0.2]	-
Age [10 years, centered]	1.8	[0.9, 3.6]	0.09	2.0	[1.0, 4.2]	<b>0.048</b>
Sex [female vs. male]	1.4	[0.6, 2.9]	0.44	1.4	[0.7, 3.1]	0.35
FU time [per year, centered]	1.3	[0.7, 2.4]	0.47	1.3	[0.7, 2.4]	0.48
Smoking [current vs. never]	0.3	[0.0, 1.2]	0.15	0.3	[0.0, 1.2]	0.13
Smoking [former vs. never]	1.2	[0.6, 2.5]	0.57	1.1	[0.6, 2.3]	0.72
HDL-C [per 10 mg/dl, centered]	1.1	[0.9, 1.3]	0.47	1.1	[0.8, 1.3]	0.64
GRS [per 5%, b-weighted, centered]	-	-	-	1.8	[1.2, 2.7]	<b>0.01</b>
<b>AugUR</b>						
Reference, Prob(event)	0.1	[0.1, 0.2]	-	0.1	[0.1, 0.2]	-
Age [10 years, centered]	1.5	[0.7, 2.8]	0.27	1.7	[0.9, 3.4]	0.12
Sex [female vs. male]	0.6	[0.3, 1.2]	0.13	0.6	[0.3, 1.2]	0.16
FU time [per year, centered]	0.9	[0.3, 2.3]	0.84	0.8	[0.3, 2.0]	0.70
Smoking [current vs. never]	2.2	[0.7, 6.0]	0.16	1.9	[0.6, 5.5]	0.24
Smoking [former vs. never]	1.1	[0.6, 2.2]	0.68	1.2	[0.6, 2.2]	0.66
HDL-C [per 10 mg/dl, centered]	1.0	[0.8, 1.3]	0.83	1.0	[0.8, 1.2]	0.91
GRS [per 5%, b-weighted, centered]	-	-	-	1.9	[1.2, 2.9]	<b>0.01</b>



**(B) Incident late AMD** (among individuals with no or early AMD at baseline, definition-2)

	<b>Model I*</b>			<b>Model II**</b>		
	<b>Prob/OR</b>	<b>95%-CI</b>	<b>P-value</b>	<b>Prob/OR</b>	<b>95%-CI</b>	<b>P-value</b>
<b>KORA-Fit</b>						
Reference, Prob(event)	0.0	[0.0, 0.0]	-	0.0	[0.0, 0.0]	-
Age [10 years, centered]	26.4	[3.2, 570.2]	<b>0.01</b>	28.8	[3.0, 789.7]	<b>0.02</b>
Sex [female vs. male]	0.6	[0.1, 3.2]	0.52	0.9	[0.1, 6.4]	0.95
FU time [per year, centered]	2.3	[0.6, 9.1]	0.23	1.3	[0.3, 5.5]	0.76
Smoking [current vs. never]	4.3	[0.4, 98.5]	0.26	5.2	[0.4, 124.9]	0.21
Smoking [former vs. never]	2.9	[0.4, 60.5]	0.36	3.1	[0.4, 64.6]	0.35
HDL-C [per 10 mg/dl, centered]	0.7	[0.4, 1.2]	0.24	0.7	[0.4, 1.3]	0.28
GRS [per 5%, b-weighted, centered]	-	-	-	4.5	[1.5, 17.1]	<b>0.01</b>
<b>KORA-FF4</b>						
Reference, Prob(event)	0.0	[0.0, 0.0]	-	0.0	[0.0, 0.0]	-
Age [10 years, centered]	7.0	[2.0, 28.0]	<b>0.004</b>	11.1	[2.6, 60.4]	<b>0.002</b>
Sex [female vs. male]	2.1	[0.5, 9.1]	0.31	2.1	[0.5, 9.6]	0.34
FU time [per year, centered]	1.5	[0.5, 5.0]	0.52	1.6	[0.5, 6.2]	0.44
Smoking [current vs. never]	9.8	[1.8, 56.4]	<b>0.01</b>	11.3	[1.8, 83.2]	<b>0.01</b>
Smoking [former vs. never]	1.5	[0.3, 6.7]	0.55	1.4	[0.3, 6.3]	0.69
HDL-C [per 10 mg/dl, centered]	1.2	[0.8, 1.6]	0.43	1.1	[0.8, 1.6]	0.47
GRS [per 5%, b-weighted, centered]	-	-	-	3.9	[1.8, 8.8]	<b>0.001</b>
<b>AugUR</b>						
Reference, Prob(event)	0.0	[0.0, 0.1]	-	0.0	[0.0, 0.1]	-
Age [10 years, centered]	2.0	[0.8, 4.8]	0.13	3.0	[1.1, 8.0]	<b>0.03</b>
Sex [female vs. male]	0.3	[0.1, 0.9]	<b>0.04</b>	0.3	[0.1, 1.0]	0.07
FU time [per year, centered]	0.5	[0.1, 2.2]	0.45	0.5	[0.1, 2.3]	0.50
Smoking [current vs. never]	3.2	[0.7, 12.0]	0.10	3.1	[0.6, 12.0]	0.13
Smoking [former vs. never]	1.0	[0.4, 2.8]	0.93	0.9	[0.3, 2.6]	0.91
HDL-C [per 10 mg/dl, centered]	1.2	[0.9, 1.6]	0.21	1.1	[0.8, 1.5]	0.59
GRS [per 5%, b-weighted, centered]	-	-	-	4.1	[2.1, 8.4]	<b>5.9*10<sup>-5</sup></b>

**(B) Incident late AMD continued** (among individuals with no or early AMD at baseline, definition-2)

	Model III*			Model IV**		
	Prob/OR	95%-CI	P-value	Prob/OR	95%-CI	P-value
<b>KORA-Fit</b>						
Reference, Prob(event)	0.0	[0.0, 0.0]	-	0.0	[0.0, 0.0]	-
Age [10 years, centered]	24.0	[2.1, 703.6]	<b>0.03</b>	21.2	[1.7, 698.0]	<b>0.04</b>
Sex [female vs. male]	0.6	[0.1, 4.6]	0.65	1.1	[0.1, 10.0]	0.96
FU time [per year, centered]	1.8	[0.5, 7.5]	0.39	1.1	[0.2, 4.9]	0.93
Smoking [current vs. never]	2.3	[0.2, 55.2]	0.55	3.0	[0.2, 80.3]	0.45
Smoking [former vs. never]	1.3	[0.1, 30.2]	0.82	1.8	[0.2, 41.8]	0.65
HDL-C [per 10 mg/dl, centered]	0.8	[0.5, 1.5]	0.58	0.7	[0.4, 1.4]	0.36
Early AMD BL	21.4	[3.4, 161.1]	<b>0.001</b>	21.1	[3.2, 164.5]	<b>0.002</b>
GRS [per 5%, b-weighted, centered]	-	-	-	4.3	[1.4, 18.4]	<b>0.02</b>
<b>KORA-FF4</b>						
Reference, Prob(event)	0.0	[0.0, 0.0]	-	0.0	[0.0, 0.0]	-
Age [10 years, centered]	5.2	[1.2, 27.4]	<b>0.04</b>	6.3	[1.2, 43.8]	<b>0.04</b>
Sex [female vs. male]	1.7	[0.3, 8.6]	0.53	1.5	[0.3, 8.6]	0.63
FU time [per year, centered]	1.3	[0.3, 5.1]	0.71	1.3	[0.3, 5.8]	0.69
Smoking [current vs. never]	28.3	[3.8, 295.9]	<b>0.002</b>	26.5	[3.3, 321.5]	<b>0.004</b>
Smoking [former vs. never]	1.6	[0.3, 9.7]	0.61	1.4	[0.2, 8.9]	0.73
HDL-C [per 10 mg/dl, centered]	1.4	[0.9, 2.1]	0.10	1.4	[0.9, 2.2]	0.09
Early AMD BL	57.7	[11.2, 372.3]	<b>3.3*10<sup>-6</sup></b>	40.7	[7.2, 282.9]	<b>5.0*10<sup>-5</sup></b>
GRS [per 5%, b-weighted, centered]	-	-	-	3.0	[1.3, 7.6]	<b>0.01</b>
<b>AugUR</b>						
Reference, Prob(event)	0.0	[0.0, 0.0]	-	0.0	[0.0, 0.0]	-
Age [10 years, centered]	1.3	[0.5, 3.6]	0.58	1.7	[0.5, 4.8]	0.35
Sex [female vs. male]	0.4	[0.1, 1.3]	0.14	0.4	[0.1, 1.4]	0.19
FU time [per year, centered]	0.7	[0.1, 2.9]	0.62	0.7	[0.1, 3.1]	0.67
Smoking [current vs. never]	4.6	[0.7, 26.3]	0.09	4.4	[0.7, 24.7]	0.09
Smoking [former vs. never]	1.0	[0.3, 2.8]	0.94	0.9	[0.3, 2.8]	0.91
HDL-C [per 10 mg/dl, centered]	1.2	[0.8, 1.6]	0.43	1.1	[0.7, 1.5]	0.69
Early AMD BL	54.6	[15.0, 354.9]	<b>1.9*10<sup>-7</sup></b>	40.2	[10.5, 266.5]	<b>2.6*10<sup>-6</sup></b>
GRS [per 5%, b-weighted, centered]	-	-	-	1.9	[1.0, 4.0]	0.06

**(C) Progression from early to late AMD** (among individuals with early AMD at baseline)

	<b>Model I*</b>			<b>Model II**</b>		
	<b>Prob/OR</b>	<b>95%-CI</b>	<b>P-value</b>	<b>Prob/OR</b>	<b>95%-CI</b>	<b>P-value</b>
<b>KORA-Fit</b>						
Reference, Prob(event)						
Age [10 years, centered]						
Sex [female vs. male]						
FU time [per year, centered]						
Smoking [current vs. never]						
Smoking [former vs. never]						
HDL-C [per 10 mg/dl, centered]						
GRS [per 5%, b-weighted, centered]						
Models did not converge.						
<b>KORA-FF4</b>						
Reference, Prob(event)						
Age [10 years, centered]						
Sex [female vs. male]						
FU time [per year, centered]						
Smoking [current vs. never]						
Smoking [former vs. never]						
HDL-C [per 10 mg/dl, centered]						
GRS [per 5%, b-weighted, centered]						
Models did not converge.						
<b>AugUR</b>						
Reference, Prob(event)	0.2	[0.1, 0.4]	-	0.1	[0.1, 0.3]	-
Age [10 years, centered]	1.0	[0.3, 3.1]	0.96	1.3	[0.4, 4.5]	0.64
Sex [female vs. male]	0.3	[0.1, 1.0]	0.07	0.3	[0.1, 1.2]	0.10
FU time [per year, centered]	0.5	[0.1, 2.6]	0.45	0.5	[0.1, 3.0]	0.51
Smoking [current vs. never]	7.2	[0.9, 69.2]	0.06	7.2	[1.0, 67.2]	0.06
Smoking [former vs. never]	0.9	[0.3, 3.0]	0.91	0.9	[0.3, 3.0]	0.87
HDL-C [per 10 mg/dl, centered]	1.3	[0.9, 1.9]	0.23	1.2	[0.8, 1.8]	0.47
GRS [per 5%, b-weighted, centered]	-	-	-	2.5	[1.2, 5.8]	<b>0.03</b>

**Supplementary Table 5. Incidence and progression rates as well as derived 1-year and 3-year risk.** Shown are estimates (Est), standard error (SE) and 95% confidence intervals (CI) of rates (per 1000 person-years; PY) and derived 1-year and 3-year risk (%) for (A) incident early AMD, (B) incident late AMD among individuals with no AMD at baseline (definition-1), (C) incident late AMD among individuals with no or early AMD at baseline (definition-2), and (D) progression from early to late AMD (also depicted in **Figure 2**). For AMD classification, 3CACSS was applied. These main analyses assumed that the event occurred at half of the follow-up time.

**(A) Incident early AMD** (among individuals with no AMD at baseline)

Study	Age [years]	N events	PY at risk	Rate (per 1000 PY)			1-year risk (%)		3-year risk (%)	
				Est	SE	95%-CI	Est	95%-CI	Est	95%-CI
KORA-Fit	All	33	8315.0	4.0	0.7	[2.8, 5.4]	0.4	[0.3, 0.5]	1.2	[0.8, 1.6]
	[35, 45]	3	1280.0	2.3	1.4	[0.9, 5.6]	0.2	[0.1, 0.6]	0.7	[0.3, 1.7]
	[45, 55]	13	3689.0	3.5	1.0	[2.1, 5.7]	0.4	[0.2, 0.6]	1.1	[0.6, 1.7]
	[55, 65]	17	2839.0	6.0	1.5	[3.8, 9.2]	0.6	[0.4, 0.9]	1.8	[1.1, 2.7]
KORA-FF4	All	46	4176.0	11.0	1.6	[8.3, 14.4]	1.1	[0.8, 1.4]	3.3	[2.5, 4.2]
	[55, 65]	13	1329.5	9.8	2.7	[5.8, 15.8]	1.0	[0.6, 1.6]	2.9	[1.7, 4.6]
	[65, 75]	24	2262.5	10.6	2.2	[7.2, 15.3]	1.1	[0.7, 1.5]	3.1	[2.1, 4.5]
	[75, 85]	9	576.0	15.6	5.2	[8.3, 27.4]	1.6	[0.8, 2.7]	4.6	[2.5, 7.9]
AugUR	All	63	1553.6	40.5	5.1	[31.7, 51.2]	4.0	[3.1, 5.0]	11.5	[9.1, 14.2]
	[70, 75]	19	451.4	42.1	9.7	[27.1, 63.0]	4.1	[2.7, 6.1]	11.9	[7.8, 17.2]
	[75, 80]	22	694.2	31.7	6.8	[21.0, 46.2]	3.1	[2.1, 4.5]	9.1	[6.1, 13.0]
	[80, 100]	22	408.0	53.9	11.5	[35.7, 78.7]	5.2	[3.5, 7.6]	14.9	[10.2, 21.0]

**(B) Incident late AMD** (among individuals with no AMD at baseline, definition-1)

Study	Age [years]	N events	PY at risk	Rate (per 1000 PY)			1-year risk (%)		3-year risk (%)	
				Est	SE	95%-CI	Est	95%-CI	Est	95%-CI
KORA-Fit	All	3	8583.0	0.3	0.2	[0.1, 0.8]	0.0	[0.0, 0.1]	0.1	[0.0, 0.3]
	[35, 45]	0	1281.0	0.0	0.0	[0.0, 0.0]	0.0	[0.0, 0.0]	0.0	[0.0, 0.0]
	[45, 55]	0	3753.0	0.0	0.0	[0.0, 0.0]	0.0	[0.0, 0.0]	0.0	[0.0, 0.0]
	[55, 65]	3	2984.0	1.0	0.6	[0.4, 2.4]	0.1	[0.0, 0.2]	0.3	[0.1, 0.7]
KORA-FF4	All	7	4441.0	1.6	0.6	[0.8, 2.9]	0.2	[0.1, 0.3]	0.5	[0.2, 0.9]
	[55, 65]	3	1341.5	2.2	1.3	[0.8, 5.4]	0.2	[0.1, 0.5]	0.7	[0.2, 1.6]
	[65, 75]	3	2412.0	1.2	0.7	[0.5, 3.0]	0.1	[0.0, 0.3]	0.4	[0.1, 0.9]
	[75, 85]	1	673.5	1.5	1.5	[0.4, 5.5]	0.1	[0.0, 0.5]	0.4	[0.1, 1.6]
AugUR	All	3	1649.0	1.8	1.1	[0.7, 4.4]	0.2	[0.1, 0.4]	0.5	[0.2, 1.3]
	[70, 75]	0	473.6	0.0	0.0	[0.0, 0.0]	0.0	[0.0, 0.0]	0.0	[0.0, 0.0]
	[75, 80]	2	731.9	2.7	1.9	[0.8, 7.6]	0.3	[0.1, 0.8]	0.8	[0.3, 2.3]
	[80, 100]	1	443.5	2.3	2.3	[0.5, 8.3]	0.2	[0.1, 0.8]	0.7	[0.2, 2.5]

**(C) Incident late AMD** (among individuals with no or early AMD at baseline, definition-2)

Study	Age [years]	N events	PY at risk	Rate (per 1000 PY)			1-year risk (%)		3-year risk (%)	
				Est	SE	95%-CI	Est	95%-CI	Est	95%-CI
KORA-Fit	All	8	8935.0	0.9	0.3	[0.5, 1.6]	0.1	[0.0, 0.2]	0.3	[0.1, 0.5]
	[35, 45]	0	1301.0	0.0	0.0	[0.0, 0.0]	0.0	[0.0, 0.0]	0.0	[0.0, 0.0]
	[45, 55]	1	3893.0	0.3	0.3	[0.1, 0.9]	0.0	[0.0, 0.1]	0.1	[0.0, 0.3]
	[55, 65]	7	3151.0	2.2	0.8	[1.1, 4.1]	0.2	[0.1, 0.4]	0.7	[0.3, 1.2]
KORA-FF4	All	14	4608.5	3.0	0.8	[1.8, 4.8]	0.3	[0.2, 0.5]	0.9	[0.5, 1.4]
	[55, 65]	3	1370.5	2.2	1.3	[0.8, 5.3]	0.2	[0.1, 0.5]	0.7	[0.2, 1.6]
	[65, 75]	6	2514.0	2.4	1.0	[1.1, 4.6]	0.2	[0.1, 0.5]	0.7	[0.3, 1.4]
	[75, 85]	5	710.0	7.0	3.1	[3.1, 14.4]	0.7	[0.3, 1.4]	2.1	[0.9, 4.2]
AugUR	All	23	1963.3	11.7	2.4	[7.8, 17.0]	1.2	[0.8, 1.7]	3.5	[2.3, 5.0]
	[70, 75]	5	551.0	9.1	4.1	[4.0, 18.6]	0.9	[0.4, 1.8]	2.7	[1.2, 5.4]
	[75, 80]	9	874.3	10.3	3.4	[5.5, 18.0]	1.0	[0.5, 1.8]	3.0	[1.6, 5.3]
	[80, 100]	9	538.0	16.7	5.6	[8.9, 29.3]	1.7	[0.9, 2.9]	4.9	[2.6, 8.4]

**(D) Progression from early to late AMD** (among individuals with early AMD at baseline)

Study	Age [years]	N events	PY at risk	Rate (per 1000 PY)			1-year risk (%)		3-year risk (%)	
				Est	SE	95%-CI	Est	95%-CI	Est	95%-CI
KORA-Fit	All	5	352.0	14.2	6.4	[6.3, 29.1]	1.4	[0.6, 2.9]	4.2	[1.9, 8.4]
	[35, 45]	0	20.0	0.0	0.0	[0.0, 0.0]	0.0	[0.0, 0.0]	0.0	[0.0, 0.0]
	[45, 55]	1	140.0	7.1	7.1	[1.7, 26.3]	0.7	[0.2, 2.6]	2.1	[0.5, 7.6]
	[55, 65]	4	167.0	24.0	12.0	[9.7, 52.5]	2.4	[1.0, 5.1]	6.9	[2.9, 14.6]
KORA-FF4	All	7	167.5	41.8	15.8	[20.6, 78.0]	4.1	[2.0, 7.5]	11.8	[6.0, 20.9]
	[55, 65]	0	29.0	0.0	0.0	[0.0, 0.0]	0.0	[0.0, 0.0]	0.0	[0.0, 0.0]
	[65, 75]	3	102.0	29.4	17.0	[10.7, 70.8]	2.9	[1.1, 6.8]	8.4	[3.2, 19.1]
	[75, 85]	4	36.5	109.6	54.8	[44.5, 240.2]	10.4	[4.4, 21.4]	28.0	[12.5, 51.4]
AugUR	All	20	314.3	63.6	14.2	[41.4, 94.9]	6.2	[4.1, 9.0]	17.4	[11.7, 24.7]
	[70, 75]	5	77.4	64.6	28.9	[28.4, 132.3]	6.3	[2.8, 12.4]	17.6	[8.2, 32.8]
	[75, 80]	7	142.4	49.2	18.6	[24.3, 91.7]	4.8	[2.4, 8.8]	13.7	[7.0, 24.1]
	[80, 100]	8	94.5	84.7	29.9	[43.6, 152.7]	8.1	[4.3, 14.2]	22.4	[12.3, 36.7]



**Supplementary Table 6. Sensitivity analyses with alternative onset of events for incidence and progression rates and derived 1-year and 3-year risk.** Shown are estimates and 95% confidence intervals (CI) of rates (per 1000 person-years) and derived 1-year and 3-year risk (%) for (A) incident early AMD, (B) incident late AMD among individuals with no AMD at baseline (definition-1), (C) incident late AMD among individuals with no or early AMD at baseline (definition-2), and (D) progression from early to late AMD. For AMD classification, 3CACSS was applied. These sensitivity analyses assumed event at 2/3rd of follow-up time.

**(A) Incident early AMD** (among individuals with no AMD at baseline)

Study	Age [years]	N events	PY at risk	Rate (per 1000 PY)			1-year risk (%)		3-year risk (%)	
				Est	SE	95%-CI	Est	95%-CI	Est	95%-CI
KORA-Fit	All	33	8413.3	3.9	0.7	[2.8, 5.4]	0.4	[0.3, 0.5]	1.2	[0.8, 1.6]
	[35, 45]	0	1281.0	0.0	0.0	[0.0, 0.0]	0.0	[0.0, 0.0]	0.0	[0.0, 0.0]
	[45, 55]	9	3724.0	2.4	0.8	[1.3, 4.2]	0.2	[0.1, 0.4]	0.7	[0.4, 1.3]
	[55, 65]	19	2897.0	6.6	1.5	[4.2, 9.8]	0.7	[0.4, 1.0]	1.9	[1.3, 2.9]
KORA-FF4	All	46	4280.0	10.7	1.6	[8.1, 14.1]	1.1	[0.8, 1.4]	3.2	[2.4, 4.1]
	[55, 65]	2	1344.7	1.5	1.1	[0.5, 4.1]	0.1	[0.0, 0.4]	0.4	[0.1, 1.2]
	[65, 75]	32	2328.3	13.7	2.4	[9.8, 18.9]	1.4	[1.0, 1.9]	4.0	[2.9, 5.5]
	[75, 85]	12	599.0	20.0	5.8	[11.6, 32.9]	2.0	[1.1, 3.2]	5.8	[3.4, 9.4]
AugUR	All	63	1587.1	39.7	5.0	[31.1, 50.1]	3.9	[3.1, 4.9]	11.2	[8.9, 14.0]
	[70, 75]	18	461.6	39.0	9.2	[24.8, 59.0]	3.8	[2.4, 5.7]	11.0	[7.2, 16.2]
	[75, 80]	22	705.5	31.2	6.6	[20.7, 45.5]	3.1	[2.0, 4.4]	8.9	[6.0, 12.8]
	[80, 100]	23	420.0	54.8	11.4	[36.6, 79.3]	5.3	[3.6, 7.6]	15.2	[10.4, 21.2]

**(B) Incident late AMD** (among individuals with no AMD at baseline, definition-1)

Study	Age [years]	N events	PY at risk	Rate (per 1000 PY)			1-year risk (%)		3-year risk (%)	
				Est	SE	95%-CI	Est	95%-CI	Est	95%-CI
KORA-Fit	All	3	8592.0	0.3	0.2	[0.1, 0.8]	0.0	[0.0, 0.1]	0.1	[0.0, 0.3]
	[35, 45]	0	1281.0	0.0	0.0	[0.0, 0.0]	0.0	[0.0, 0.0]	0.0	[0.0, 0.0]
	[45, 55]	0	3753.0	0.0	0.0	[0.0, 0.0]	0.0	[0.0, 0.0]	0.0	[0.0, 0.0]
	[55, 65]	2	2992.3	0.7	0.5	[0.2, 1.9]	0.1	[0.0, 0.2]	0.2	[0.1, 0.6]
KORA-FF4	All	7	4456.7	1.6	0.6	[0.8, 2.9]	0.2	[0.1, 0.3]	0.5	[0.2, 0.9]
	[55, 65]	1	1345.3	0.7	0.7	[0.2, 2.7]	0.1	[0.0, 0.3]	0.2	[0.1, 0.8]
	[65, 75]	4	2421.0	1.7	0.8	[0.7, 3.6]	0.2	[0.1, 0.4]	0.5	[0.2, 1.1]
	[75, 85]	2	676.3	3.0	2.1	[0.9, 8.2]	0.3	[0.1, 0.8]	0.9	[0.3, 2.4]
AugUR	All	3	1650.6	1.8	1.0	[0.7, 4.4]	0.2	[0.1, 0.4]	0.5	[0.2, 1.3]
	[70, 75]	0	473.6	0.0	0.0	[0.0, 0.0]	0.0	[0.0, 0.0]	0.0	[0.0, 0.0]
	[75, 80]	2	733.0	2.7	1.9	[0.8, 7.6]	0.3	[0.1, 0.8]	0.8	[0.3, 2.3]
	[80, 100]	1	444.1	2.3	2.3	[0.5, 8.3]	0.2	[0.1, 0.8]	0.7	[0.2, 2.5]

**(C) Incident late AMD** (among individuals with no or early AMD at baseline, definition-2)

Study	Age [years]	N events	PY at risk	Rate (per 1000 PY)			1-year risk (%)		3-year risk (%)	
				Est	SE	95%-CI	Est	95%-CI	Est	95%-CI
KORA-Fit	All	8	8959.0	0.9	0.3	[0.5, 1.6]	0.1	[0.0, 0.2]	0.3	[0.1, 0.5]
	[35, 45]	0	1301.0	0.0	0.0	[0.0, 0.0]	0.0	[0.0, 0.0]	0.0	[0.0, 0.0]
	[45, 55]	1	3896.0	0.3	0.3	[0.1, 0.9]	0.0	[0.0, 0.1]	0.1	[0.0, 0.3]
	[55, 65]	5	3171.0	1.6	0.7	[0.7, 3.2]	0.2	[0.1, 0.3]	0.5	[0.2, 1.0]
KORA-FF4	All	14	4640.3	3.0	0.8	[1.8, 4.8]	0.3	[0.2, 0.5]	0.9	[0.5, 1.4]
	[55, 65]	1	1374.3	0.7	0.7	[0.2, 2.7]	0.1	[0.0, 0.3]	0.2	[0.1, 0.8]
	[65, 75]	6	2527.7	2.4	1.0	[1.1, 4.6]	0.2	[0.1, 0.5]	0.7	[0.3, 1.4]
	[75, 85]	7	724.3	9.7	3.7	[4.8, 18.0]	1.0	[0.5, 1.8]	2.9	[1.4, 5.3]
AugUR	All	23	1975.3	11.6	2.4	[7.8, 16.9]	1.2	[0.8, 1.7]	3.4	[2.3, 4.9]
	[70, 75]	2	553.1	3.6	2.6	[1.1, 10.1]	0.4	[0.1, 1.0]	1.1	[0.3, 3.0]
	[75, 80]	11	879.3	12.5	3.8	[7.1, 20.9]	1.2	[0.7, 2.1]	3.7	[2.1, 6.1]
	[80, 100]	10	543.0	18.4	5.8	[10.1, 31.5]	1.8	[1.0, 3.1]	5.4	[3.0, 9.0]

**(D) Progression from early to late AMD** (among individuals with early AMD at baseline)

Study	Age [years]	N events	PY at risk	Rate (per 1000 PY)			1-year risk (%)		3-year risk (%)	
				Est	SE	95%-CI	Est	95%-CI	Est	95%-CI
KORA-Fit	All	5	367.0	13.6	6.1	[6.0, 27.9]	1.4	[0.6, 2.8]	4.0	[1.8, 8.0]
	[35, 45]	0	20.0	0.0	0.0	[0.0, 0.0]	0.0	[0.0, 0.0]	0.0	[0.0, 0.0]
	[45, 55]	1	143.0	7.0	7.0	[1.7, 25.8]	0.7	[0.2, 2.5]	2.1	[0.5, 7.4]
	[55, 65]	3	178.7	16.8	9.7	[6.1, 40.4]	1.7	[0.6, 4.0]	4.9	[1.8, 11.4]
KORA-FF4	All	7	183.7	38.1	14.4	[18.8, 71.1]	3.7	[1.9, 6.9]	10.8	[5.5, 19.2]
	[55, 65]	0	29.0	0.0	0.0	[0.0, 0.0]	0.0	[0.0, 0.0]	0.0	[0.0, 0.0]
	[65, 75]	2	106.7	18.8	13.3	[5.8, 52.2]	1.9	[0.6, 5.1]	5.5	[1.7, 14.5]
	[75, 85]	5	48.0	104.2	46.6	[45.9, 213.4]	9.9	[4.5, 19.2]	26.8	[12.9, 47.3]
AugUR	All	20	324.7	61.6	13.8	[40.0, 91.4]	6.0	[3.9, 8.7]	16.9	[11.3, 24.0]
	[70, 75]	2	79.5	25.2	17.8	[7.8, 70.1]	2.5	[0.8, 6.8]	7.3	[2.3, 19.0]
	[75, 80]	9	146.3	61.5	20.5	[32.8, 107.7]	6.0	[3.2, 10.2]	16.9	[9.4, 27.6]
	[80, 100]	9	98.9	91.0	30.3	[48.5, 159.4]	8.7	[4.7, 14.7]	23.9	[13.5, 38.0]

## References

- 1 Brandl C, Breinlich V, Stark KJ, *et al.* Features of Age-Related Macular Degeneration in the General Adults and Their Dependency on Age, Sex, and Smoking: Results from the German KORA Study. *PLoS One* 2016;**11**:e0167181. doi:10.1371/journal.pone.0167181
- 2 Meisinger C, Löwel H, Thorand B, *et al.* Leisure time physical activity and the risk of type 2 diabetes in men and women from the general population: The MONICA/KORA Augsburg Cohort Study. *Diabetologia* Published Online First: 2005. doi:10.1007/s00125-004-1604-3
- 3 Winkler G, Doring A. Validation of a short qualitative food frequency list used in several German large scale surveys. *Z Ernährungswiss* 1998;**37**:234–41. <http://www.ncbi.nlm.nih.gov/pubmed/9800314>
- 4 Holzapfel C, Grallert H, Huth C, *et al.* Genes and lifestyle factors in obesity: results from 12,462 subjects from MONICA/KORA. *Int J Obes* 2010;**34**:1538–45. <http://www.ncbi.nlm.nih.gov/pubmed/20386550>
- 5 Wichmann HE, Gieger C, Illig T, *et al.* KORA-gen--resource for population genetics, controls and a broad spectrum of disease phenotypes. *Gesundheitswesen* 2005;**67 Suppl 1**:S26-30.
- 6 Auton A, Abecasis GR, Altshuler DM, *et al.* A global reference for human genetic variation. *Nature*. 2015. doi:10.1038/nature15393
- 7 Fritsche LG, Igl W, Bailey JNC, *et al.* A large genome-wide association study of age-related macular degeneration highlights contributions of rare and common variants. *Nat Genet* 2016;**48**:134–43. doi:10.1038/ng.3448
- 8 Winkler TW, Grassmann F, Brandl C, *et al.* Genome-wide association meta-analysis for early age-related macular degeneration highlights novel loci and insights for advanced disease. *bioRxiv* 2019;:1–18. doi:10.1101/2019.12.20.883801
- 9 Brandl C, Zimmermann ME, Gunther F, *et al.* On the impact of different approaches to classify age-related macular degeneration: Results from the German AugUR study. *Sci Rep* 2018;**8**:1–10. doi:10.1038/s41598-018-26629-5

- 10 Stark K, Olden M, Brandl C, *et al.* The German AugUR study: study protocol of a prospective study to investigate chronic diseases in the elderly. *BMC Geriatr* 2015;**15**:130. doi:10.1186/s12877-015-0122-0
- 11 Winn B, Whitaker D, Elliott DB, *et al.* Factors affecting light-adapted pupil size in normal human subjects. *Invest Ophthalmol Vis Sci* 1994;**35**:1132–7. <http://www.ncbi.nlm.nih.gov/pubmed/8125724>
- 12 Olden M, Holle R, Heid IM, *et al.* IDGenerator: unique identifier generator for epidemiologic or clinical studies. *BMC Med Res Methodol* 2016;**16**:120. doi:10.1186/s12874-016-0222-3
- 13 Klein R, Meuer SM, Myers CE, *et al.* Harmonizing the classification of age-related macular degeneration in the three-continent AMD consortium. *Ophthalmic Epidemiol* 2014;**21**:14–23. doi:10.3109/09286586.2013.867512
- 14 Ferris 3rd FL, Wilkinson CP, Bird A, *et al.* Clinical classification of age-related macular degeneration. *Ophthalmology* 2013;**120**:844–51. doi:10.1016/j.ophtha.2012.10.036
- 15 Fleiss JL, Cohen J. Equivalence of Weighted Kappa and Intraclass Correlation Coefficient as Measures of Reliability. *Educ Psychol Meas* 1973;**33**:613–9.
- 16 Gangnon RE, Lee KE, Klein BEK, *et al.* Misclassification can explain most apparent regression of age-related macular degeneration: Results from multistate models with misclassification. *Investig Ophthalmol Vis Sci* Published Online First: 2014. doi:10.1167/iovs.13-12375
- 17 Ferris 3rd FL, Wilkinson CP, Bird A, *et al.* Clinical classification of age-related macular degeneration. *Ophthalmology* 2013;**120**:844–51. doi:10.1016/j.ophtha.2012.10.036